

TRU-SCAPES[®]



LED LANDSCAPE LIGHTING



BELGARD
PAVES THE WAY

2024

Hardscape Lights with Replaceable LED Bar

Our professional grade low voltage LED hardscape step and wall lights are constructed of a powder coated aluminum bracket with an easy replaceable LED light bar. Use any light bar option on any unit. Highlight steps, walls, and outdoor kitchens.



ITEMS INCLUDED:

- Silicone Wire Nuts
- Lead Wire: 60"

LIGHTING SPECIFICATIONS:

- Construction: Powder Coated Aluminum
- TS-A6000 & TS-A6000C-RLMP Finishes: Black or Bronze
- TS-MA6000-GRY Finish: Gray
- Light Source: Interchangeable Integrated LED Modules
- Voltage Range: 9V – 15V AC/DC
- Power Supply: 12V Low Voltage Transformer (Sold Separately)

HARDSCAPE LIGHTS

– REPLACEABLE (COLOR OR WHITE) LED MODULES –



RGBCW HARDSCAPE LIGHT TS-A6000C

Features Bluetooth control of full color wheel, Kelvin temperature, and dimming capability.

Dimensions: 7-1/8"(L) x 3"(W) x 7/8"(H)

Color Temp (CCT): 2200K – 6500K

Watts: 1W

Lumens: Variable/Dimming



Tru-Scapes
Color Control



TRADITIONAL HARDSCAPE LIGHT TS-A6000

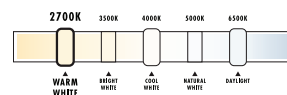
Dimensions: 7-1/8"(L) x 3"(W) x 7/8"(H)

Color Temp (CCT): 2700K

Watts: 1W

Lumens: 75

CRI: >80



MODERN HARDSCAPE LIGHT TS-MA6000-GRY

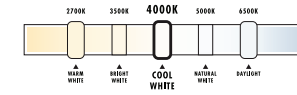
Dimensions: 7-1/8"(L) x 3"(W) x 7/8"(H)

Color Temp (CCT): 4000K

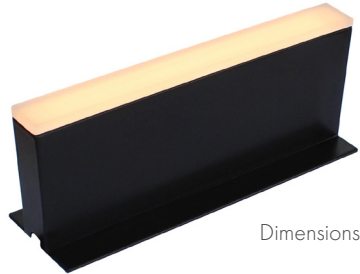
Watts: 1

Lumens: 78

CRI: >80



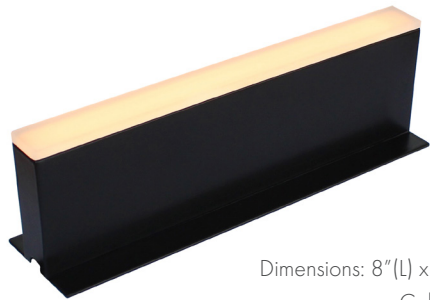
PAVER LIGHTS



TRADITIONAL
WARM WHITE

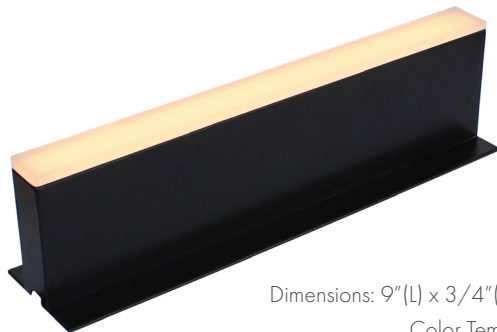
TS-HPL-6

Dimensions: 6"(L) x 3/4"(W) x 2-3/8"(H)
Color Temp (CCT): 2700K
Watts: 1.5W
Lumens: 35



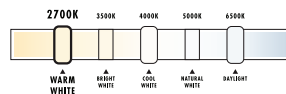
TS-HPL-8

Dimensions: 8"(L) x 3/4"(W) x 2-3/8"(H)
Color Temp (CCT): 2700K
Watts: 1.8W
Lumens: 45



TS-HPL-9

Dimensions: 9"(L) x 3/4"(W) x 2-3/8"(H)
Color Temp (CCT): 2700K
Watts: 2.5W
Lumens: 60



MODERN STYLE
COOL WHITE

TS-MHPL-6

Dimensions: 6"(L) x 3/4"(W) x 2-3/8"(H)
Color Temp (CCT): 4000K
Watts: 1.5W
Lumens: 42



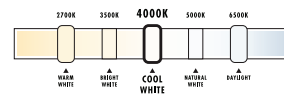
TS-MHPL-8

Dimensions: 8"(L) x 3/4"(W) x 2-3/8"(H)
Color Temp (CCT): 4000K
Watts: 1.8W
Lumens: 52



TS-MHPL-9

Dimensions: 9"(L) x 3/4"(W) x 2-3/8"(H)
Color Temp (CCT): 4000K
Watts: 2.5W
Lumens: 60



Illuminate your Hardscape Borders with Easy to Install Paver Lights

The paver lights are available in 6", 8" & 9" lengths designed to fit along sailor or soldier course borders of patios, walkways, and driveways.



ITEMS INCLUDED:

- Silicone Wire Nuts
- Lead Wire: 36"

LIGHTING SPECIFICATIONS:

- Construction: Powder Coated Aluminum with Frosted Acrylic Lens
- Finish: Black or Gray
- Light Source: Integrated LED's
- Voltage Range: 10V – 15V AC/DC
- Power Supply: 12V Low Voltage Transformer (Sold Separately)

Patent Pending

PILLAR LIGHTS



TRADITIONAL PILLAR LIGHT
TS-PL100-BRZ

Dimensions: 9"(L) x 9"(W) x 20"(H)
Watts: 3W (G4 LED Lamp)
Lumens: 300



MODERN PILLAR LIGHT
TS-PL10 (BRZ or BLK)

Dimensions: 9"(L) x 9"(W) x 18"(H)
Watts: 3W (G4 LED Lamp)
Lumens: 300

**Do you want to note
black or bronze
somehow or like
shown?**



NOBLE PILLAR LIGHT
TS-PL102-BRZ

Dimensions: 11"(L) x 11"(W) x 19-7/8"(H)
Watts: 6W (Replaceable Bluetooth RGBCW LED)
Lumens: 250 at 2700K



Tru-Scapes
Color Control

More for Your Hardscape

Utilize a Tru-Scapes low voltage pillar light with an antique brushed bronze finish and frosted heat resistant glass to beautify natural stone or concrete pillars. This fixture will add a soft inviting glow to any outdoor living space.

ITEMS INCLUDED:

- Silicone Wire Nuts
- LED Light Source
- Lead Wire: 36"
- Mounting Base
- Masonry Drill Bit and Template
- Anchor Kit

LIGHTING SPECIFICATIONS:

- Construction: Powder Coated Aluminum & Frosted Tempered Glass
- Finishes: Antique Brushed Bronze (BRZ) or Black (BLK)
- Power Supply: 12V Low Voltage Transformer (Sold Separately)

TS-PL100 & TS-PL101:

- Color Temp (CCT): 2700K
- Voltage Range: 9V – 15V AC/DC
- Mounting Plate: 5.5" x 5.5"

TS-PL102:

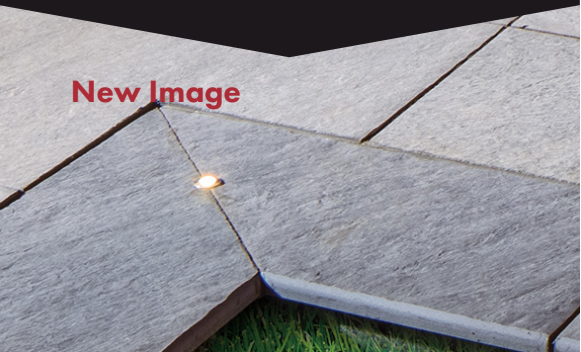
- Color Temp (CCT): 2200K – 6500K
- Voltage Range: 10V – 15V AC/DC
- Mounting Plate: 10.25" x 10.25"



New Image

Eye-Catching Flush Mount Dot Lights to Light Your Hardscape

Tru-Scapes Low Voltage LED Dot Lights are designed with a fully sealed AES plastic housing and a frosted lens. Available in 1.5" and 2.5" with warm white, cool white and RGBCW. Easily installed in concrete, stone, wood, or composite decking with a 1" or 2" core drill bit.



ITEMS INCLUDED:

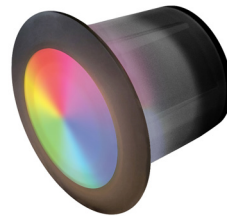
- Silicone Wire Nuts
- Lead Wire: 36"

LIGHTING SPECIFICATIONS:

- Construction: Fully Sealed AES Housing with 1.5" or 2.5" OD Ring
- Finish: Anodized Bronze Ring or Stainless Steel Ring
- Light Source: Integrated LED
- Light Beam: 60°
- Voltage Range: 10V – 15V AC/DC
- Power Supply: 12V Low Voltage Transformer (Sold Separately)

DOT LIGHTS

RGBCW COLOR CHANGE CAPABILITY



TS-25DOTC-BRZ

Size: 2.5"(L) x 2.5"(W) x 2"(H)
 Finish: Anodized Bronze Ring
 Color Temp (CCT): 2200K – 6500K
 Watts: 1.5W
 Lumens: 60



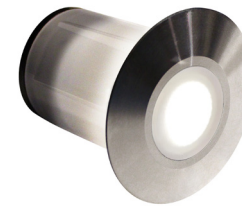
TS-M25DOTC-SS

Size: 2.5"(L) x 2.5"(W) x 2"(H)
 Finish: 316 Stainless Steel Ring
 Color Temp (CCT): 2200K – 6500K
 Watts: 1.5W
 Lumens: 60



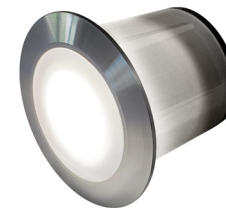
Tru-Scapes
Color Control

MODERN STYLE COOL WHITE



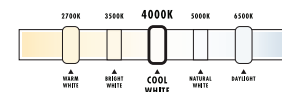
TS-M15DOT-SS

Size: 1.5"(L) x 1.5"(W) x 1.625"(H)
 Finish: 316 Stainless Steel Ring
 Color Temp (CCT): **4000K**
 Watts: 0.2W
 Lumens: 13

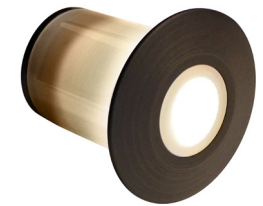


TS-M25DOT-SS

Size: 2.5"(L) x 2.5"(W) x 2"(H)
 Finish: 316 Stainless Steel Ring
 Color Temp (CCT): **4000K**
 Watts: 1.2W
 Lumens: 105



TRADITIONAL WARM WHITE



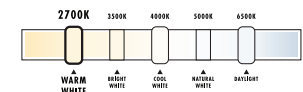
TS-15DOT-BRZ

Size: 1.5"(L) x 1.5"(W) x 1.625"(H)
 Finish: Anodized Bronze Ring
 Color Temp (CCT): 2700K
 Watts: 0.2W
 Lumens: 10



TS-25DOT-BRZ

Size: 2.5"(L) x 2.5"(W) x 2"(H)
 Finish: Anodized Bronze Ring
 Color Temp (CCT): 2700K
 Watts: 1.2W
 Lumens: 90



WELL LIGHTS

— AVAILABLE IN BLACK OR BRONZE —



HIGH POWER IN-GROUND WELL LIGHT

TS-B201

Light Beam: 120°

Watts: 8W (PAR36)

Size: 5.5"(Dia.) x 9.625"(H)

Lumens: 900



IN-GROUND WELL LIGHT

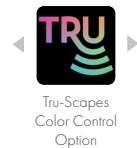
TS-B203

Light Beam: 60°

Watts: 4W (MR16)

Size: 4"(Dia.) x 6.875"(H)

Lumens: 250



Showcase Your Property with In-ground Lighting

These low voltage LED landscape well lights are heavy-duty complete with lamp. The watertight composite in-ground housing reveals a brass lid above the surface. Use to highlight focal points such as plants, walls, statues or structures.



ITEMS INCLUDED:

- Silicone Wire Nuts
- LED Lamp
- Lead Wire: 36"

LIGHTING SPECIFICATIONS:

- Construction: Brass & Composite
- Finish: Black or Bronze
- Color Temp (CCT): 2700K
- Voltage Range: 9V – 15V AC/DC
- Power Supply/Voltage: 12V Low Voltage Transformer (Sold Separately)

PATH LIGHTS

— AVAILABLE IN BLACK OR BRONZE —



TRADITIONAL
PATH LIGHT
TS-B301

Overall Height: 22-1/4"
Lumens: 300



CLASSIC
PATH LIGHT
TS-B302

Overall Height: 23-1/4"
Lumens: 300



MODERN
PATH LIGHT
TS-B306

Overall Height: 21-1/4"
Lumens: 300



Tru-Scapes
Color Control
Option

Shorted copy
below and added
image

Elegant & Stylish Path Lights

Our professional grade LED path lights are a solid heavy-duty brass fixture used to highlight walkways, pathways and themed areas. With a stylish head and a 360° LED lamp, they provide optimum light output and include a heavy-duty ground stake.



ITEMS INCLUDED:

- Silicone Wire Nuts
- G4 LED Lamp
- Lead Wire: 36"
- Heavy-duty 8" Ground Stake

LIGHTING SPECIFICATIONS:

- Construction: Solid Brass
- Finishes: Black or Bronze
- Light Source: G4 LED Lamp
- Light Beam: 360°
- Watts: 3W
- Color Temp (CCT): 2700K
- Voltage Range: 9V – 15V AC/DC
- Power Supply: 12V Low Voltage Transformer (Sold Separately)

ACCENT LIGHTS

— AVAILABLE IN BLACK OR BRONZE —



TRADITIONAL
ACCENT LIGHT

TS-B102

Light Beam: 40°
Watts: 4W (MR16)
Lumens: 250



Tru-Scapes
Color Control
Option



WALL WASH LIGHT

TS-B105

Light Beam: 60°
Watts: 5.5W (MR16)
Lumens: 450



HIGH POWER
ACCENT LIGHT

TS-B106

Light Beam: 120°
Watts: 8W (PAR36)
Lumens: 900



Tru-Scapes
Color Control
Option

Heavy-duty Accent Lights

Professional grade low voltage LED landscape accent lights constructed of heavy-duty die-cast brass with a durable finish. Accent lights are commonly used to highlight trees, shrubs, walls or other focal points in the landscape. The accent lights feature a tool-less knob to adjust fixture angle.



ITEMS INCLUDED:

- Silicone Wire Nuts
- LED Lamp
- Lead Wire: 36"
- Heavy-duty 8" Ground Stake

LIGHTING SPECIFICATIONS:

- Construction: Solid Brass
- Finishes: Black or Bronze
- Color Temp (CCT): 2700K
- Voltage Range: 9V – 15V AC/DC
- Power Supply: 12V Low Voltage Transformer (Sold Separately)

TRANSFORMERS & WIRE



200W SS ASTROLOGICAL TRANSFORMER

TS-TSSA-200

Input: 120V AC 50/60Hz
Output: 12/15V AC 200VA (200W)
Heavy Duty 304 Stainless Steel
Includes Built-in Astrological Time



400W WIFI CAPABLE / DUAL ZONE TRANSFORMER

TS-TSSW-400

400W Wifi Capable / Dual Zone
Input: 120V AC 50/60Hz
Output: 12/15V AC 200VA (200W) x2
Heavy Duty 304 Stainless Steel



100W ECONOMY TRANSFORMER

TS-TBPT-100

Simple Photocell Control



DIRECT BURIAL LOW VOLTAGE WIRE

TS-122G250-EZ

250ft Spool of 12/2 CCA Direct Burial
Wire in an EZ-Pull Box

Check out our website at www.tru-scapes.com for accessories and more.

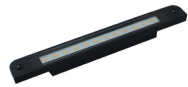


TRU-SCAPES COLOR CONTROL

Tru-Scapes fixtures and lamps with App control are now available – offering RGB Color control as well as Kelvin (Warm - Cool White), Dimming, and Zone control via Bluetooth connection from your device.



Tru-Scapes
Color Control

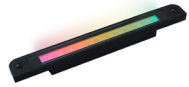


Hardscape LED Module

TS-A6000-RBULB

Fits All TS-A6000 Models

Power: 1W LED
CCT: 2700K/4000K
Lumens: 75/78



Hardscape RGBCW Module

TS-A6000C-RBULB

Fits All TS-A6000 Models

Power: 1W LED
CCT: 2200K – 6500K
Lumens: Variable/Dimming



Tru-Scapes
Color Control



MR16 Lamps

4W: TS-40MR16

5.5W: TS-60MR16

Power: 4W OR 5.5W LED
CCT: 2700K
Beam: 4W - 40° – Lumens: 250
Beam: 5.5W - 60° – Lumens: 450



MR16 RGBCW Lamp

TS-40MR16-C

Fits TS-B102 & TS-B203

Power: 6W RGBCW LED
CCT: 2200K – 6500K
Lumens: 370 at 2700K



Tru-Scapes
Color Control



G4 Lamp

TS-360G4-1

Power: 3W LED
CCT: 2700K
Beam: 360°
Lumens: 300



PAR36 Lamp

TS-120PAR36

Power: 8W LED
CCT: 2700K
Beam: 120°
Lumens: 900



G4 3W Color Changing Lamp

TS-360G4-C

Power: 3W LED
CCT: 2200K – 6500K
Beam: 360°
Lumens: 70



Tru-Scapes
Color Control



PAR36 RGBCW Lamp

TS-120PAR36-C

Fits TS-B106 & TS-B201

Power: 8W LED
CCT: 2200K – 6500K
Lumens: 680 at 2700K



Tru-Scapes
Color Control

LIMITED WARRANTIES

Tru-Scapes® Landscape Lighting warrants that its products will be free from defects in workmanship and materials for five (5) years to the original purchaser. Warranty coverage requires receipt of purchase. Exceptions to our warranty as follows:

- Tru-Scapes Light fixtures warranty is only valid when using a Tru-Scapes transformer.
- Light fixtures are warranted to original purchaser for 5 years from date of purchase; Light sockets and fixture housing on all fixtures are warranted for life to the original purchaser.
- All Tru-Scapes Transformers are under warranty for 5 years from original date of purchase to the original purchaser. Warranty does not cover unusual acts of nature such as lightening strikes and power surges.
- Tru-Scapes LED Bulbs are warranted for five (5) years or 30,000 hours, whichever comes first to the original purchaser.
- Exterior black powder coat finishes are warranted for 5 years for chipping and flaking to the original purchaser.
- Natural patina on all brass fixtures is natural and normally occurring and not covered under any warranty. Cleaning of fixtures using a soft cloth towel with a cleaner is recommended to restore the finish.
- Tru-Scapes® warranties do not cover plants that die or burn because of continuous light shined on them. Certain acid-loving plants such as arborvitae, pine trees, and others should not be exposed to light of any kind for more than 18 hours a day as these plants need time to sleep and allow photosynthesis to naturally occur.

Contact your dealer for more information.



TRU-SCAPES®
LANDSCAPE LIGHTING

Tru-Scapes Landscape Lighting, Southeastern PA

www.tru-scapes.com | www.belgard.com/lighting | [f](#) [@](#)