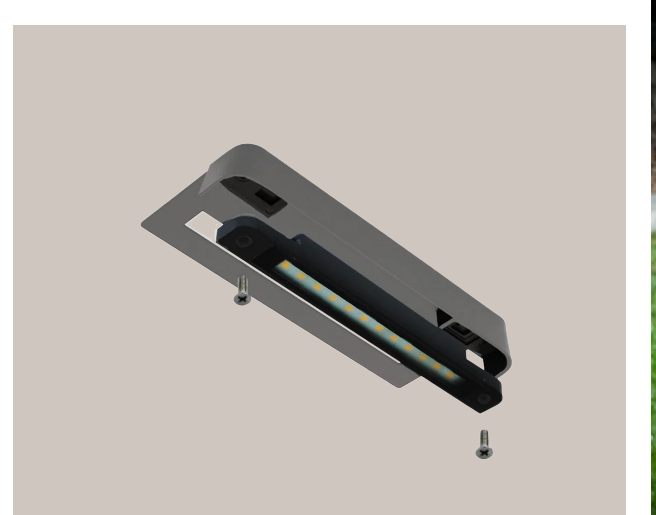


TS-MA6000

DATA SPECIFICATION SHEET



CATEGORY: HARDSCAPE

COLORS: ●

PRODUCT OVERVIEW

Low Voltage Hardscape Lighting Step / Wall Light - MA6000 Series

Our professional grade Modern Hardscape Light—LED low voltage hardscape step and wall lights are an aluminum fixture with a stainless steel bracket. Our Hardscape light features 4000K LED lights to highlight steps, wall and outdoor kitchens. Our hardscape light is available in gray. These have become one of the more popular hardscape additions in recent years.



Check Out All Our Step Lights
Scan to Visit Our Website!

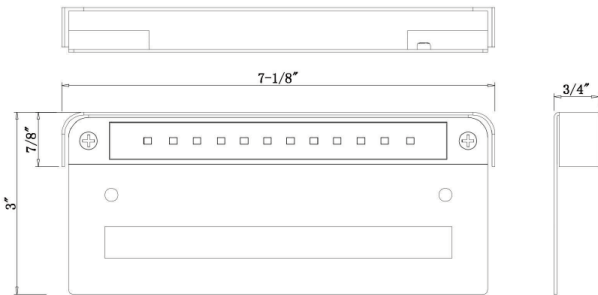
SPECIFICATIONS

- Construction: Powder Coated Aluminum
- Finish: Grey Powder Coating.
- Lead Wire: 70" (Standard) 18AWG, SPT-1W Black Waterproof Wire.
- Light Source: Replaceable LED Module, 4000K, 1W
- Lumens: 78
- Beam Angle: 120
- Maximum Lamp Rating: 1W
- Power Factor: 0.75
- Operating Voltage: 12V AC/DC
- Dimensions: 7.1" x 3.0" x 0.8"
- Powered By: Low Voltage Transformer (Sold Separately)
- IP65 Rated

FEATURES & BENEFITS

- Aluminum Construction
- Powder Coated Finishes – Protects fixture from wear and corrosion.
- Available in Grey Powder Coat Finish
- Low profile light fixture that illuminates downward – Fits into areas that other light won't fit.
- Replaceable LED Module
- Low energy consumption – Low Voltage LED Design.
- Lifespan of 30,000 Hours
- 78 Lumen of Light Output.
- Comes with (2) Silicone Filled Wire Connectors – Rated for direct burial and outdoor use.

PRODUCT DIMENSIONS



WARRANTY

- Tru-Scapes Lighting Sockets have a Lifetime Warranty.
- Light fixtures of brass, copper or stainless steel, aluminum, including finishes are warranted for five (5) years.
- LED Bulbs are warranted for five (5) years or 30,000 hours, whichever comes first.
- Stainless Steel, Painted and Weatherproof (plastic housing) transformers, excluding timers and photo cells, are warranted for five (5) years for the original purchaser.
- Tru-Scapes warranties do not cover plants that die or burn because of continuous light shined on them. This is not a defect, but the inherent nature of such plants. Certain acid loving plants such as arborvitae, pine trees, and others must not be exposed to light of any kind for more than 18 hours a day as these plants need time to sleep and allow photosynthesis to naturally occur.
- Low voltage landscape lighting fixture housings made of brass do naturally patina in color which is not a defect. (Please see www.Tru-Scapes.com for cleaning instructions.)
- See our full Warranty details at www.Tru-Scapes.com/faq.

CERTIFICATIONS



Indicates the product meets safety standards tested by Intertek.



Signifies the product has passed safety tests by Underwriters Laboratories.



Ensures the product is dust-tight and highly water-resistant.

CONTACT US

© Copyright 2024,
Tru-Scapes® Registered Trademark•
Bucks County, PA • All Rights Reserved•
contacts@tru-scapes.com
1-800-878-1240

WWW.TRU-SCAPES.COM

