

# TRU-SCAPES<sup>®</sup>

## PRODUCT GUIDE



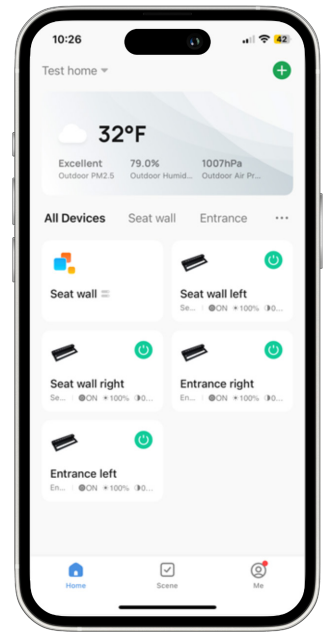




# TRU-SCAPES® COLOR CONTROL



Tru-Scapes® now offers a range of fixtures that come ready with Color Control, giving you app-based Bluetooth access to RGBCW color, warm-to-cool white tuning, dimming, and zone control. Most other Tru-Scapes® fixtures can easily be upgraded with our Color Control lamps – so you can enjoy full control without replacing your existing lights.







## PATH LIGHTS

For Walkways, Flower Beds, Garden Edges & Driveways



### TS-B301

#### Traditional Path Light

Color-changing lamp upgrade available.

- Construction: solid brass
- Light Source: G4 LED lamp
- 3 watts
- 190 lumens
- 2700K warm output
- 360° beam spread
- H 24" x W 1-1/2" x D 1-1/2"
- Available in black & bronze

### TS-B302

#### Classic Path Light

Color-changing lamp upgrade available.

- Construction: solid brass
- Light Source: G4 LED lamp
- 3 watts
- 158 lumens
- 2700K warm output
- 360° beam spread
- H 24" x W 7-7/8" x D 7-7/8"
- Available in black & bronze

### TS-B306

#### Modern Path Light

Color-changing lamp upgrade available.

- Construction: solid brass
- Light Source: G4 LED lamp
- 3 watts
- 96 lumens
- 2700K warm output
- 360° beam spread
- H 21-3/4" x W 1" x D 6-1/2"
- Available in black & bronze

### TS-A6500C

#### Adjustable Angle Landscape Light

Ships color-changing ready.

- Construction: powder coated aluminum
- Light source: replaceable module
- 2 watts
- 68 lumens - dimmable with app
- 2700K - 6500K RGBCW BT control
- 120° beam spread
- H 8-1/2" x W 7-1/8" x D 1-1/2"
- Available in black or bronze

## ACCENT LIGHTS

For Trees, Facades, Garden Features & Architectural Highlights



### TS-B102

#### Traditional Accent Light

Includes a ground stake. Color-changing lamp upgrade available.

- Construction: solid brass
- Light Source: MR16 LED lamp
- 4 watts
- 382 lumens
- 2700K warm output
- 40° beam spread
- H 6-5/8" x W 2-3/8" x D 2-3/8"
- Available in black & bronze

### TS-B105

#### Wall Wash Light

Color-changing lamp upgrade available.

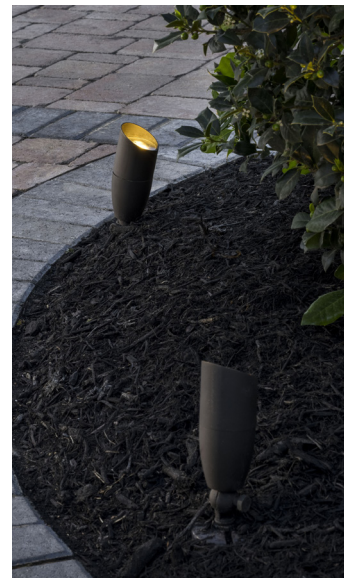
- Construction: solid brass
- Light Source: MR16 LED lamp
- 5 watts
- 383 lumens
- 2700K warm output
- 60° beam spread
- H 5" x W 4-3/8" x D 4-3/8"
- Available in black & bronze

### TS-B106

#### High Power Accent Light

Color-changing lamp upgrade available.

- Construction: solid brass
- Light Source: PAR36 LED lamp
- 8 watts
- 435 lumens
- 2700K warm output
- 120° beam spread
- H 5-3/8" x W 4-5/8" x D 4-5/8"
- Available in black & bronze







## WELL LIGHTS

For Uplighting Trees, Walls, Architectural Features & Landscapes



### TS-B201

#### High Power In-Ground Well Light

Color-changing lamp upgrade available.

- Construction: PVC & solid brass
- Light source: PAR36 LED lamp
- 8 watts
- 560 lumens
- 2700K warm output
- 120° beam spread
- H 9-5/8" x W 5-1/2" x D 5-1/2"
- Available in black & bronze

### TS-B203

#### In-Ground Well Light

Color-changing lamp upgrade available.

- Construction: PVC & solid brass
- Light source: MR16 LED lamp
- 4 watts
- 308 lumens
- 2700K warm output
- 60° beam spread
- H 6-7/8" x W 4" x D 4"
- Available in black & bronze

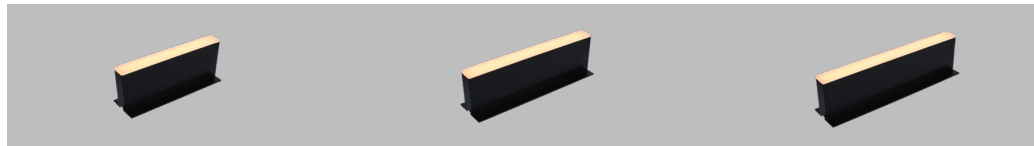






## PAVER LIGHTS

For Patios, Walkways & Hardscape Edges



### TS-HPL-6

#### Traditional 6" Paver Light

- Construction: aluminum & acrylic
- Integrated LED light source
- 1.5 watts
- 26 lumens
- 2700K warm output
- 120° beam spread
- H 2-3/8" x W 3/4" x D 6"
- Available in black

### TS-HPL-8

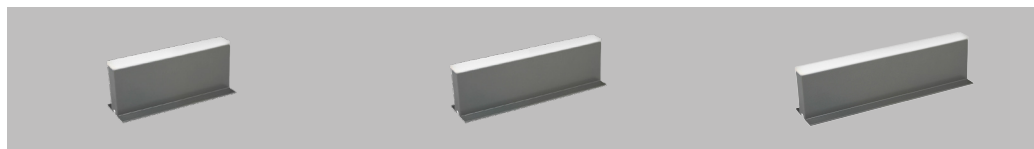
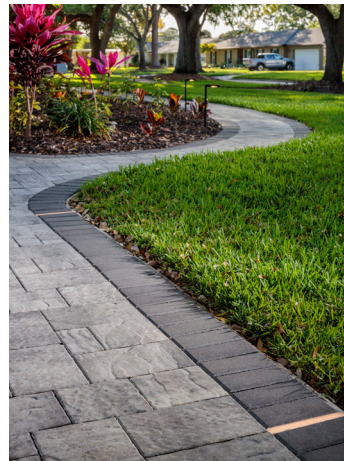
#### Traditional 8" Paver Light

- Construction: aluminum & acrylic
- Integrated LED light source
- 1.8 watts
- 44 lumens
- 2700K warm output
- 120° beam spread
- H 2-3/8" x W 3/4" x D 8"
- Available in black

### TS-HPL-9

#### Traditional 9" Paver Light

- Construction: aluminum & acrylic
- Integrated LED light source
- 2.5 watts
- 52 lumens
- 2700K warm output
- 120° beam spread
- H 2-3/8" x W 3/4" x D 9"
- Available in black



### TS-MHPL-6

#### Modern 6" Paver Light

- Construction: aluminum & acrylic
- Integrated LED light source
- 1.5 watts
- 32 lumens
- 4000K cool output
- 120° beam spread
- H 6-5/8" x W 2-3/8" x D 2-3/8"
- Available in grey

### TS-MHPL-8

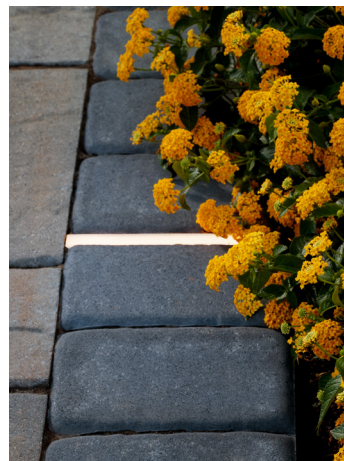
#### Modern 8" Paver Light

- Construction: aluminum & acrylic
- Integrated LED light source
- 1.8 watts
- 52 lumens
- 4000K cool output
- 120° beam spread
- H 5" x W 4-3/8" x D 4-3/8"
- Available in grey

### TS-MPHL-9

#### Modern 9" Paver Light

- Construction: aluminum & acrylic
- Integrated LED light source
- 2.5 watts
- 62 lumens
- 4000K cool output
- 120° beam spread
- H 5-3/8" x W 4-5/8" x D 4-5/8"
- Available in grey



## PILLAR LIGHTS

For Columns, Entranceways, Patios & Pillars



### TS-PL100

#### Traditional Pillar Light

Color-changing lamp upgrade available.

- Construction: powder coated aluminum
- Light source: G4 LED lamp
- 3 watts
- 195 lumens
- 2700K warm output
- 360° beam spread
- H 20" x W 9" x D 9"
- Available in bronze

### TS-PL101

#### Modern Pillar Light

Color-changing lamp upgrade available.

- Construction: powder coated aluminum
- Light source: G4 LED lamp
- 3 watts
- 180 lumens
- 2700K warm output
- 360° beam spread
- H 14-3/8" x W 7-1/2" x D 7-1/2"
- Available in black

### TS-PL102

#### Noble Pillar Light

Ships color-changing ready.



- Construction: powder coated aluminum
- Light source: G4-C LED lamp
- 6 watts
- 184 lumens - dimmable with app
- 2700K - 6500K RGBCW BT control
- 360° beam spread
- H 19-7/8" x W 11" x D 11"
- Available in bronze

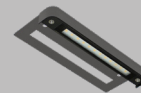
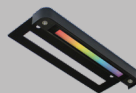
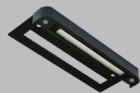
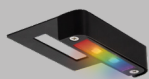






## REPLACEABLE HARDSCAPE LIGHTS

For Retaining Walls, Step Caps, Outdoor Kitchens & Patios



### TS-A3000C

#### Mini Color Changing Hardscape Light

Ships color-changing ready.

- Construction: powder coated aluminum
- Light source: replaceable module
- 0.8 watts
- 18 lumens - dimmable with app
- 2700K - 6500K RGBCW BT control
- 120° beam spread
- H 7/8" x W 3-1/2" x D 3"
- Requires 1/2" tread overhang\*
- Available in black or bronze

### TS-A6000

#### Traditional Hardscape Light

Color-changing lamp upgrade available.

- Construction: powder coated aluminum
- Light source: replaceable module
- 1 watts
- 85 lumens
- 2700K warm output
- 120° beam spread
- H 3/4" x W 7-1/8" x D 3"
- Requires 1/2" tread overhang\*
- Available in black or bronze

### TS-A6000C

#### Color Changing Hardscape Light

Ships color-changing ready.

- Construction: powder coated aluminum
- Light source: replaceable module
- 2 watts
- 68 lumens - dimmable with app
- 2700K - 6500K RGBCW BT control
- 120° beam spread
- H 3/4" x W 7-1/8" x D 3"
- Requires 1/2" tread overhang\*
- Available in black or bronze

### TS-MA6000

#### Modern Hardscape Light

Color-changing lamp upgrade available.

- Construction: powder coated aluminum
- Light source: replaceable module
- 1 watts
- 92 lumens
- 4000K cool output
- 120° beam spread
- H 3/4" x W 7-1/8" x D 3"
- Requires 1/2" tread overhang\*
- Available in grey

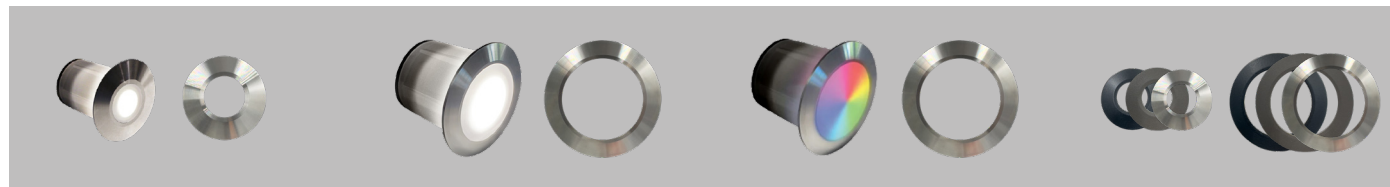






## DOT LIGHTS

For Pavers, Stone, Wood & Decking



TS-M15DOT-SS

### Modern 1.5" Dot Light

Ships with 1.5" stainless steel flat ring. Dot rings are replaceable; integrated light source is not.

- Construction: PVC & stainless steel ring
- Integrated LED light source
- .25 watts
- 12 lumens
- 4000K cool output
- 60° beam spread
- H 1-5/8" x W 1-1/2" x D 1-1/2"

TS-M25DOT-SS

### Modern 2.5" Dot Light

Ships with 2.5" stainless steel flat ring. Dot rings are replaceable; integrated light source is not.

- Construction: PVC & stainless steel ring
- Integrated LED light source
- 1.2 watts
- 105 lumens
- 4000K cool output
- 60° beam spread
- H 1-5/8" x W 2-1/2" x D 2-1/2"

TS-M25DOTC-SS

### Modern Color Changing 2.5" Dot Light

Ships with 2.5" stainless steel flat ring. Ships color-changing ready.

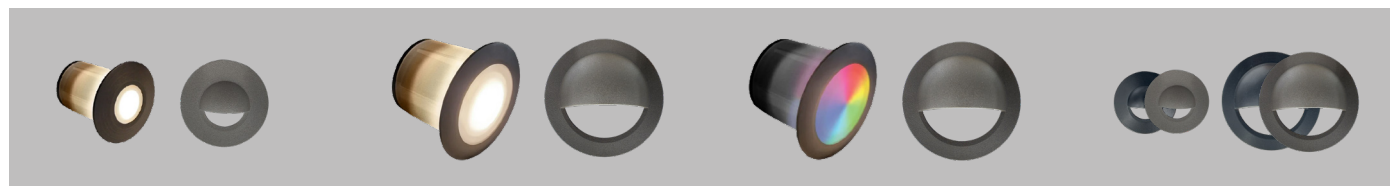
- Construction: PVC & stainless steel ring
- Integrated LED light source
- 1.5 watts
- 60 lumens - dimmable with app
- 2700K - 6500K RGBCW BT control
- 60° beam spread
- H 1-5/8" x W 2-1/2" x D 2-1/2"

TS-D150/250-FLT

### 1.5" & 2.5" Flat Replacement Rings

Flat rings available in black, bronze, or stainless steel.

- Powder-coated aluminum (black & bronze options)
- Stainless steel option available only in flat rings
- Dimensions:
  - 150 Flat: H 1-1/2" x W 1-1/2" x D 1/3"
  - 250 Flat: H 2-1/2" x W 2-1/2" x D 1/3"
- Sold in packs of 10



TS-I15DOT-BRZ

### Traditional 1.5" Dot Light

Ships with 1.5" bronze flat ring and 1.5" bronze eyebrow ring. Dot rings are replaceable; integrated light source is not.

- Construction: PVC & bronze powder coated aluminum ring
- Integrated LED light source
- .25 watts
- 10 lumens
- 2700K warm output
- 60° beam spread
- H 1-5/8" x W 1-1/2" x D 1-1/2"

TS-I25DOT-BRZ

### Traditional 2.5" Dot Light

Ships with 2.5" bronze flat ring and 2.5" bronze eyebrow ring. Dot rings are replaceable; integrated light source is not.

- Construction: PVC & bronze powder coated aluminum ring
- Integrated LED light source
- 1.2 watts
- 90 lumens
- 2700K warm output
- 60° beam spread
- H 1-5/8" x W 1-1/2" x D 1-1/2"

TS-I25DOTC-BRZ

### Traditional Color Changing 2.5" Dot Light

Ships with 2.5" bronze flat ring and 2.5" bronze eyebrow ring. Ships color-changing ready.

- Construction: PVC & bronze powder coated aluminum ring
- Integrated LED light source
- 1.5 watts
- 60 lumens - dimmable with app
- 2700K - 6500K RGBCW BT control
- 60° beam spread
- H 1-5/8" x W 2-1/2" x D 2-1/2"

TS-D150/250-EYE

### 1.5" & 2.5" Eyebrow Replacement Rings

Eyebrow rings available in black & bronze.

- Powder-coated aluminum (black & bronze options)
- Stainless steel option available only in flat rings
- Dimensions:
  - 150 Eye: H 1-1/2" x W 1-1/2" x D 3/4"
  - 250 Eye: H 2-1/2" x W 2-1/2" x D 3/4"
- Sold in packs of 10

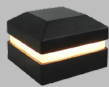






## POST CAP LIGHTS

For Deck & Fence Post Caps

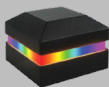


### TS-C125

#### 2.5" LED Post Cap Light

Fits standard 2.5" aluminum posts.

- Construction: powder coated aluminum
- Integrated LED light source
- 2 watts
- 18 lumens
- 2700K warm output
- 360° beam spread
- H 1-7/8" x W 2-3/4" x D 2-3/4"
- Available in black



### TS-C125C

#### 2.5" Color Changing LED Post Cap Light

Fits standard 2.5" aluminum posts. Ships color-changing ready.

- Construction: powder coated aluminum
- Integrated LED light source
- 3 watts
- 22 lumens - dimmable with app
- 2700K - 6500K RGBCW BT control
- 360° beam spread
- H 1-7/8" x W 2-3/4" x D 2-3/4"
- Available in black

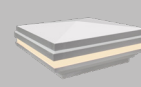


### TS-C130

#### 3" LED Post Cap Light

Fits standard 3" aluminum posts.

- Construction: powder coated aluminum
- Integrated LED light source
- 2 watts
- 30 lumens
- 2700K warm output
- 360° beam spread
- H 2-5/8" x W 3-3/8" x D 3-3/8"
- Available in black

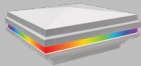


### TS-C140

#### 4" LED Post Cap Light

Fits standard 4" vinyl (PVC) posts.

- Construction: PVC plastic
- Integrated LED light source
- 3 watts
- 32 lumens
- 2700K warm output
- 360° beam spread
- H 2-3/8" x W 6" x D 6"
- Available in white

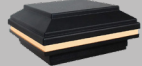


### TS-C140C

#### 4" Color Changing LED Post Cap Light

Fits standard 4" vinyl (PVC) posts. Ships color-changing ready.

- Construction: PVC plastic
- Integrated LED light source
- 4 watts
- 32 lumens - dimmable with app
- 2700K - 6500K RGBCW BT control
- 360° beam spread
- H 2-3/8" x W 6" x D 6"
- Available in white



### TS-C145

#### 4.5" LED Post Cap Light

Fits a TREX® Transcend deck post.

- Construction: AES UV rated plastic
- Integrated LED light source
- 3 watts
- 27 lumens
- 2700K warm output
- 360° beam spread
- H 2-5/8" x W 6" x D 6"
- Available in black, brown, & white



### TS-C145C

#### 4.5" Color Changing LED Post Cap Light

Fits a TREX® Transcend deck post. Ships color-changing ready.

- Construction: AES UV rated plastic
- Integrated LED light source
- 4 watts
- 30 lumens - dimmable with app
- 2700K - 6500K RGBCW BT control
- 360° beam spread
- H 2-5/8" x W 6" x D 6"
- Available in black, brown, & white



### TS-C150

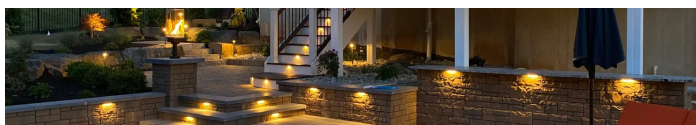
#### 5" LED Post Cap Light

Fits Timbertech® Radiance deck posts.

- Construction: AES UV rated plastic
- Integrated LED light source
- 3 watts
- 40 lumens
- 2700K warm output
- 360° beam spread
- H 2-7/8" x W 7-1/8" x D 7-1/8"
- Available in black, & white

## STEP RISER LIGHTS

For Steps & Decks

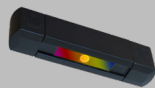


### TS-A501

#### 3" LED Step Riser Light

Available in black, brown, & white finish.

- Construction: powder coated aluminum
- Integrated LED light source
- 0.5 watts
- 18 lumens
- 2700K warm output
- 180° beam spread
- H 5/8" x W 3" x D 1/2"
- Requires 1/2" tread overhang\*



### TS-A501C

#### 3" Color Changing LED Step Riser Light

Available in black, brown, & white finish. Ships color-changing ready.

- Construction: powder coated aluminum
- Integrated LED light source
- 1 watts
- 16 lumens - dimmable with app
- 2700K - 6500K RGBCW BT control
- 180° beam spread
- H 5/8" x W 3" x D 1/2"
- Requires 1/2" tread overhang\*

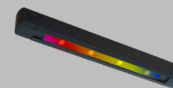


### TS-A1001

#### 6" LED Step Riser Light

Available in black, brown, & white finish.

- Construction: powder coated aluminum
- Integrated LED light source
- 1.5 watts
- 123 lumens
- 2700K warm output
- 180° beam spread
- H 5/8" x W 6" x D 1/2"
- Requires 1/2" tread overhang\*



### TS-A1001C

#### 6" Color Changing LED Step Riser Light

Available in black, brown, & white finish. Ships color-changing ready.

- Construction: powder coated aluminum
- Integrated LED light source
- 2 watts
- 65 lumens - dimmable with app
- 2700K - 6500K RGBCW BT control
- 180° beam spread
- H 5/8" x W 6" x D 1/2"
- Requires 1/2" tread overhang\*





## SURFACE MOUNTED LIGHTS

For Steps & Deck Posts



**TS-25WMA**  
Puck Light

- Construction: powder coated aluminum
- Integrated LED light source
- 2 watts
- 44 lumens
- 2700K warm output
- 180° beam spread
- H 2-1/2" x W 2-1/2" x D 3/4"
- Available in black, brown, & white

**TS-40WMA**  
Wedge Light

- Ships color-changing ready.
- Construction: powder coated aluminum
  - Integrated LED light source
  - 15 watts
  - 15 lumens - dimmable with app
  - 2700K - 6500K RGBCW BT control
  - 180° beam spread
  - H 4" x W 2" x D 1"
  - Available in black & white



## TRU-POST® LIGHTS & ACCESSORIES

For Deck & Fence Post Caps



**TP-WL101A**  
Tru-Post® Classic Light

- Color-changing lamp upgrade available.
- Construction: powder coated aluminum
  - Included G4 LED lamp
  - 3 watts
  - 126 lumens
  - 2700K warm output
  - 360° beam spread
  - H 5-1/4" x W 7-7/8" x D 7-7/8"
  - Available in black

**TP-WL103A**  
Tru-Post® Traditional Light

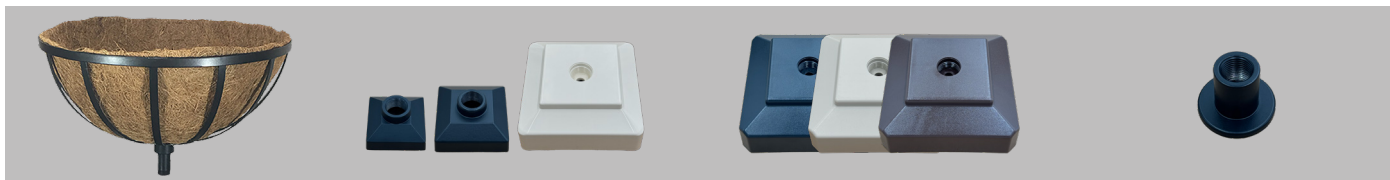
- Color-changing lamp upgrade available.
- Construction: powder coated aluminum
  - Included G4 LED lamp
  - 3 watts
  - 184 lumens
  - 2700K warm output
  - 360° beam spread
  - H 8" x W 6" x D 6"
  - Available in black

**TP-OL12SS**  
Tru-Post® Stainless Steel Torch

- Construction: powder coated aluminum & weather-resistant stainless steel
- Power source: N/A
- Watts N/A
- Lumens N/A
- H 18" x W 4-1/2" x D 4-1/2"
- Available in stainless steel

**TP-ST100**  
Tru-Post® Solar Torch

- Construction: powder coated aluminum
- Power Source: N/A
- Watts N/A
- 37 lumens
- 1800K warm output
- 360° beam spread
- H 25" x W 5" x D 5"
- Available in black



**TP-WL101A**  
Tru-Post® Planter Basket

- Construction: powder coated aluminum
- Basket material: coco liner
- Stem size: 2"
- H 8" x W 12" x D 12"
- Available in black

**TP-C20/25/4**  
Tru-Post® Post Caps

- From left to right
- TP-C20-BLK: 2" x 2" black aluminum cap
- TP-C25-BLK: 2.5" x 2.5" black aluminum cap
- TP-C4-WHT: 4" x 4" white vinyl cap

**TP-C45-XXX**  
Tru-Post® Post Caps Continued

- From left to right
- 4.5" x 4.5" black Vinyl Cap
- 4.5" x 4.5" white Vinyl Cap
- 4.5" x 4.5" brown Vinyl Cap
- All 4.5" vinyl caps are designed to fit Trex Transcend railing post

**TP-UMA-BLK**  
Tru-Post® Universal Mount

- Construction: black powder coated aluminum
- Threaded for Tru-Post® accessories
- Compatible only with planter baskets and torches





## WALL & POST SCONCE LIGHTS

For Exterior Walls, Deck Posts & Outdoor Structures



### TSS-AS200

#### Low Profile Post / Wall Sconce

Ships color-changing ready.

- Construction: powder coated aluminum
- Integrated LED light source
- 3 watts
- 50 lumens - dimmable with app
- 2700K - 6500K RGBCW BT control
- 60° beam spread
- H 4" x W 2" x D 7/8"
- Available in black, bronze, & white



### TSS-AS201

#### Dual Lamp Sconce

Ships color-changing ready.

- Construction: powder coated aluminum
- Integrated LED light source
- 12 watts
- 802 lumens - dimmable with app
- 2700K - 6500K RGBCW BT control
- 60° beam spread
- H 5-3/8" x W 2" x D 3-1/4"
- Available in black & bronze



### TSS-AS202

#### Single Lamp Sconce

Ships color-changing ready.

- Construction: powder coated aluminum
- Integrated LED light source
- 6 watts
- 456 lumens - dimmable with app
- 2700K - 6500K RGBCW BT control
- 60° beam spread
- H 3-1/4" x W 2" x D 3-1/4"
- Available in black & bronze



### TSS-AS300

#### Modern Sconce

Ships color-changing ready.

- Construction: powder coated aluminum
- Integrated LED light source
- 6 watts
- 300 lumens - dimmable with app
- 2700K - 6500K RGBCW BT control
- 360° beam spread
- H 12" x W 6-3/8" x D 7-5/8"
- Available in black & bronze

## CEILING, PENDANT & BISTRO LIGHTS

For Pergolas, Patios & Outdoor Entertaining Spaces



### TSS-AC100

#### Recessed Ceiling & Soffit Light

Ships color-changing ready.

- Construction: powder coated aluminum
- Integrated LED light source
- 8 watts
- 392 lumens - dimmable with app
- 2700K - 6500K RGBCW BT control
- 120° beam spread
- 4" diameter x 1-3/8" height
- Available in black & white



### TSS-AP100

#### Ceiling & Soffit Light

Ships color-changing ready.

- Construction: powder coated aluminum
- Integrated LED light source
- 8 watts
- 392 lumens - dimmable with app
- 2700K - 6500K RGBCW BT control
- 120° beam spread
- 4" diameter x 1-3/8" height
- Available in black, bronze, & white

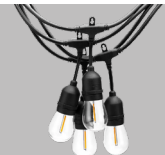


### TSS-AP400

#### Traditional Pendant Light

Ships color-changing ready.

- Construction: powder coated aluminum
- Integrated LED light source
- 2.5 watts
- 68 lumens - dimmable with app
- 2700K - 6500K RGBCW BT control
- 120° beam spread
- H 5-3/4" x W 2-3/8" x D 2-3/8"
- Available in black & bronze



### TSS-SL100

#### Hanging Bistro Lights

Connect 12' lengths together  
Comes with 6 lamps per line

- Edison Style LED lamps
- Low voltage light source
- 1 watt per lamp, 2700K
- 12' strip lights w/ 6pcs, 6 watt
- 90 lumens per lamp
- 10-15v AC/DC
- H 6" x W 12'
- TSS-GC1—adapter included







## CONCRETE LIGHTS

For Concrete Driveways, Patios, Walls & Steps (Patent Pending)



### TSC-150

#### Concrete 1.5" Dot Light

Ships with 1.5" black flat ring and 1.5" black eyebrow ring. Dot rings are replaceable; integrated light source is not.

- Construction: PVC & black powder coated aluminum ring
- Integrated LED light source
- 0.25 watts
- 10 lumens
- 2700K warm output
- 60° beam spread
- Black eyebrow and flat caps

### TSC-250C

#### Concrete 2.5" Dot Light

Ships with 2.5" black flat ring and 2.5" black eyebrow ring. Ships color-changing ready.

- Construction: PVC & black powder coated aluminum ring
- Integrated LED light source
- 1.5 watts
- 60 lumens - dimmable with app
- 2700K - 6500K RGBCW BT control
- 60° beam spread
- Black eyebrow and flat caps

### TSC-600C

#### Concrete 6" Step Light

Ships color-changing ready.

- Construction: Powder-coated aluminum
- Integrated LED light source
- 1.5 watts
- 8 lumens - dimmable with app
- 2700K - 6500K RGBCW BT control
- 120° beam spread
- Available in black

### INSTALLATION SERIES

#### Step-by-Step Setup for All Concrete Lights

Scan the QR code above to watch the full animated installation guide for Tru-Scapes® concrete lights, featuring the TSC-150, TSC-250C, and TSC-600C.

This three-part video series provides clear instructions on:

- Mount flange installation
- Wiring and final assembly
- Best practices for a clean, professional finish







## TRANSFORMERS

For Reliable, Low-Voltage Power Distribution In Outdoor Lighting Systems



### TS-TBPT-100

#### 100W Transformer

Single-zone 100W transformer with built-in timer

- Construction: black UV rated plastic
- Input voltage: 120V AC
- Output voltage: 12V/15V AC
- Timer/photocell compatibility
- Cord length: 6 ft
- H 6-1/2" x W 4-1/2" x D 3-1/2"
- Wall-mountable

### TS-TSSA-200

#### 200W Transformer

Single-zone 200W astronomical transformer with built-in timer

- Construction: stainless steel
- Input voltage: 120V AC
- Output voltage: 12V/15V AC
- Astrological timer (single zone)
- Timer/photocell compatibility
- Cord length: 6 ft
- H 8" x W 5-1/2" x D 4-1/2"
- Wall-mountable

### TS-TSSW-400

#### 400W Wifi Transformer

Dual-zone 400W WiFi transformer with app control

- Construction: stainless steel
- Input voltage: 120V AC
- Output voltage: 12V/15V AC
- Dual independent zones
- WiFi timer compatibility
- Cord length: 6 ft
- H 11-1/2" x W 7" x D 6"
- Wall-mountable







# ACCESSORIES & REPLACEMENTS



## REPLACEMENT LAMPS

For Swapping Out Light Sources In Compatible Fixtures



TS-360G4-1

### G4 LED Lamp

- Installation: drop-in replacement
- Compatibility: G4 bi-pin fixtures
- 3 watts
- 380 lumens
- 2700K warm output
- 360° beam spread
- H 1-3/8" x W 5/8" x D 5/8"



TS-360G4-C

### G4 LED Color Changing Lamp

- Installation: drop-in replacement
- Compatibility: G4 bi-pin fixtures
- 1.5 watts
- 110 lumens - dimmable with app
- 2700K - 6500K RGBCW BT control
- 360° beam spread
- H 1-3/8" x W 5/8" x D 5/8"



TS-120PAR36

### PAR36 LED Lamp

- Installation: drop-in replacement
- Compatibility: slip-on spade connectors
- 8 watts
- 850 lumens
- 2700K warm output
- 120° beam spread
- H 2-3/8" x W 4-3/8" x D 4-3/8"



TS-120PAR36-C

### PAR36 LED Color Changing Lamp

- Installation: drop-in replacement
- Compatibility: slip-on spade connectors
- 8 watts
- 640 lumens - dimmable with app
- 2700K - 6500K RGBCW BT control
- 120° beam spread
- H 2-3/8" x W 4-3/8" x D 4-3/8"



TS-40MR16-4W

### MR16 4W Lamp

- Installation: drop-in replacement
- Compatibility: GU5.3 bi-pin fixtures
- 4 watts
- 400 lumens
- 2700K warm output
- 40° beam spread
- H 1-3/4" x W 2" x D 2"



TS-60MR16-5.5W

### MR16 5.5W Lamp

- Installation: drop-in replacement
- Compatibility: GU5.3 bi-pin fixtures
- 5.5 watts
- 480 lumens
- 2700K warm output
- 60° beam spread
- H 1-3/4" x W 2" x D 2"



TS-40MR16-C

### MR16 Color Changing Lamp

- Installation: drop-in replacement
- Compatibility: GU5.3 bi-pin fixtures
- 8 watts
- 420 lumens - dimmable with app
- 2700K - 6500K RGBCW BT control
- 40° beam spread
- H 1-7/8" x W 2" x D 2"



## REPLACEMENT LIGHT MODULES

For Restoring Or Upgrading Internal Fixture Components



TS-A3000C -RLAMP

### A3000C Replacement Color Changing Module

- Installation: screw-in module
- Compatibility: A3000 Series
- .8 watts
- 18 lumens - dimmable with app
- 2700K - 6500K RGBCW BT control
- 120° beam spread
- H 3/4" x W 3-3/8" x D 3/4"



TS-A6000 -RLAMP

### A6000 Replacement Module

- Installation: screw-in module
- Compatibility: A6000 Series
- 1 watts
- 85 lumens
- 2700K - 6500K RGBCW BT control
- 120° beam spread
- H 3/4" x W 6-7/8" x D 3/4"
- A6000 lamps compatible with all A6000/6500 fixtures - mix & match



TS-A6000C -RLAMP

### A6000C & A6500C Replacement Color Changing Module

- Installation: screw-in module
- Compatibility: A6000 Series
- 2 watts
- 68 lumens - dimmable with app
- 2700K warm output
- 120° beam spread
- H 5/8" x W 6-7/8" x D 3/4"
- A6000 lamps compatible with all A6000/6500 fixtures - mix & match



TS-MA6000 -RLAMP

### MA6000 Replacement Module

- Installation: screw-in module
- Compatibility: A6000 Series
- 1 watts
- 92 lumens
- 4000K cold output
- 120° beam spread
- H 5/8" x W 6-7/8" x D 3/4"
- A6000 lamps compatible with all A6000/6500 fixtures - mix & match





# ACCESSORIES & REPLACEMENTS



## SMART CONTROL

For Extended Bluetooth Connectivity & Seamless Lighting Control



TS-EXT001-BLK

### Bluetooth Range Extender

- Construction: UV Rated Plastic
- RGBCW Bluetooth Control Extender
- Lead Wire: 36" connectors
- Includes a ground stake
- H 23" x W 1-1/2" x D 1-1/2"



## MOUNTING & EXTENSION HARDWARE

For Flexible Fixture Positioning & Secure Installs



TS-UM12B

### Base Mount

- Construction: solid brass
- Mounts to: Walls, trees, or other flat surfaces
- H 1/2" x W 3" x D 3"
- Available in black & bronze

TS-STEM16

### Extension / Replacement Stem

- Construction: solid brass
- Raises path/accent lights for flexible installs
- H 16" x W 1" x D 1"
- Available in black & bronze



## WIRING & CONNECTION TOOLS

For Clean, Professional Installation



TS-122G250-EZ

### 250' 12/2 EZ Pull Wire

- 12/2 low voltage landscape lighting wire
- Copper-coated aluminum construction
- EZ Pull carton for easy dispensing
- Rated for direct burial installations

TS-WNUT50

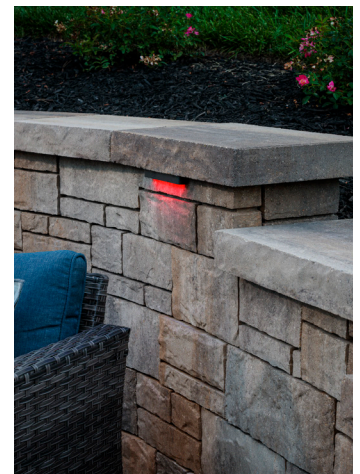
### Gel-Filled Wire Nuts (50 pcs.)

- Keeps connections & daisy-chain runs secure and moisture-free
- Pre-filled with silicone gel for waterproof protection
- Includes 50 wire nuts per pack
- Ideal for low-voltage outdoor lighting connections

TS-WS1

### Wire Strippers

- For precision cutting & stripping 10-20 AWG solid or stranded copper wire
- Compatible sizes:
  - Metric: 0.8, 1.0, 1.3, 1.6, 2.0, 2.6 mm
  - AWG: 20, 18, 16, 14, 12, 10 AWG
- H 7-1/2" x W 2" x D 1/2"







# ACCESSORIES & REPLACEMENTS



## REPLACEMENT TRIM RINGS

For Restoring Finish To Dot Lights



TS-DOT150-FLAT

### Flat Replacement Rings (1.5")

- Designed for 1.5" Tru-Scapes® dot lights
- Sold in packs of 10 rings
- Available finishes: black, bronze and stainless steel
- Flat ring style for seamless replacement

TS-DOT150-EYE

### Eyebrow Replacement Rings (1.5")

- Designed for 1.5" Tru-Scapes® dot lights
- Sold in packs of 10 rings
- Eyebrow design for directional light output
- Available finishes: black or bronze

TS-DOT250-FLAT

### Flat Replacement Rings (2.5")

- Designed for 2.5" Tru-Scapes® dot lights
- Sold in packs of 10 rings
- Flat ring style for a clean, uniform look
- Available finishes: black, bronze, stainless steel

TS-DOT250-EYE

### Eyebrow Replacement Rings (2.5")

- Designed for 2.5" Tru-Scapes® dot lights
- Sold in packs of 10 rings
- Eyebrow design for directional light output
- Available finishes: black or bronze





# SCAN FOR HELP, SETUP & SUPPORT



## YOUR COMPLETE OUTDOOR LIGHTING SOLUTION

[www.Tru-Scapes.com](http://www.Tru-Scapes.com) | [@TruScapes](https://twitter.com/TruScapes) | [support@tru-scapes.com](mailto:support@tru-scapes.com)



### Tru-Scapes® Website

Visit Our Official Website

- Explore all of our products
- Find local dealers and installers
- Learn more about Tru-Scapes® solutions



### Resources & Guides

Browse Videos, Catalogs, & More

- Access step-by-step instructional guides
- Download installation instructions
- Watch how-to and install videos



### Warranty Info

Review Our 5-Year Warranty Details

- Coverage on fixtures, bulbs, & transformers
- Terms for construction & finishes
- What's included & what's not



### Color Control Help

Step-by-Step App Setup & Control Guide

- Download the Tru-Scapes® Control App
- Pairing & light control
- Troubleshooting issues

