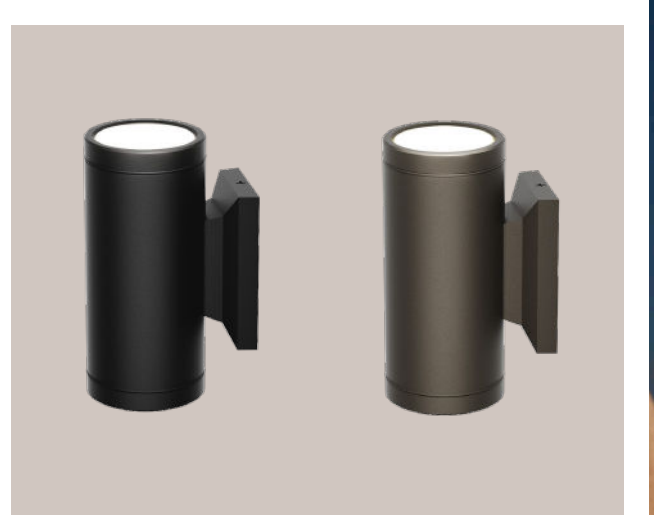


TSS-AS201 SERIES

DATA SPECIFICATION SHEET



CATEGORY: STRUCTURE

COLORS: ● ●

PRODUCT OVERVIEW

Dual Lamp Sconce TSS-AS201 Series

The Tru-Scapes TSS-AS201 Dual Lamp Sconce is a stylish outdoor lighting solution available in Black and Bronze. It offers up and down lighting, creating a warm ambiance while ensuring energy-efficient performance with modern LED technology. Designed for durability, it's ideal for entryways, patios, or architectural features.



Check Out Our Wall Sconces!
Scan to Visit Our Website!

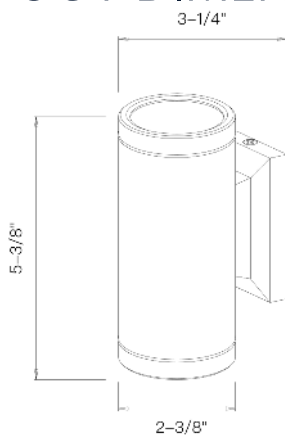
SPECIFICATIONS

- Construction: Powder Coated Aluminum
- Finish: Black or Bronze
- Light Source: Integrated LEDs
- Watts: 10W
- Beam Angle: 60
- Power Factor: 0.804
- Lumens: 802
- Color Temp (CCT):
 - RGBCW (2700K - 6500K)
- Voltage Range: 9v - 15v AC/DC
- Powered By: 12V Low Voltage Transformer (Sold Separately)
- Dimensions: H 5-3/8" x W 3" x D 4-3/8"
- IP65 Rated

FEATURES & BENEFITS

- The design allows for installation in any orientation, offering flexible lighting solutions for various outdoor settings.
- high-quality aluminum with a weather-resistant powder coating, ensuring long-lasting durability and protection.
- The IP65 rating ensures the sconce is resistant to water and dust, making it ideal for outdoor use in all conditions.
- The classic design enhances the architectural features of your home while providing effective outdoor illumination.
- Low energy consumption - Low Voltage LED Design.
- This sconce is suitable for mounting on both posts and walls, allowing you to customize your outdoor lighting.

PRODUCT DIMENSIONS



WARRANTY

- Tru-Scapes Lighting Sockets have a Lifetime Warranty.
- Light fixtures of brass, copper or stainless steel, aluminum, including finishes are warranted for five (5) years.
- LED Bulbs are warranted for five (5) years or 30,000 hours, whichever comes first.
- Stainless Steel, Painted and Weatherproof (plastic housing) transformers, excluding timers and photo cells, are warranted for five (5) years for the original purchaser.
- Tru-Scapes warranties do not cover plants that die or burn because of continuous light shined on them. This is not a defect, but the inherent nature of such plants. Certain acid loving plants such as arborvitae, pine trees, and others must not be exposed to light of any kind for more than 18 hours a day as these plants need time to sleep and allow photosynthesis to naturally occur.
- Low voltage landscape lighting fixture housings made of brass do naturally patina in color which is not a defect. (Please see www.Tru-Scapes.com for cleaning instructions.)
- See our full Warranty details at www.Tru-Scapes.com/faq.

CERTIFICATIONS



Indicates the product meets safety standards tested by Intertek.



Ensures the product is dust-tight and highly water-resistant.

CONTACT US

© Copyright 2024,
Tru-Scapes® Registered Trademark•
Bucks County, PA • All Rights Reserved•
contacts@tru-scapes.com
1-800-878-1240

WWW.TRU-SCAPES.COM