

TRU-SCAPES[®]

PRODUCT GUIDE

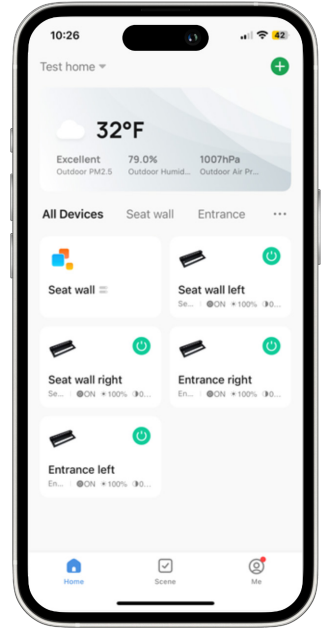




TRU-SCAPES® COLOR CONTROL



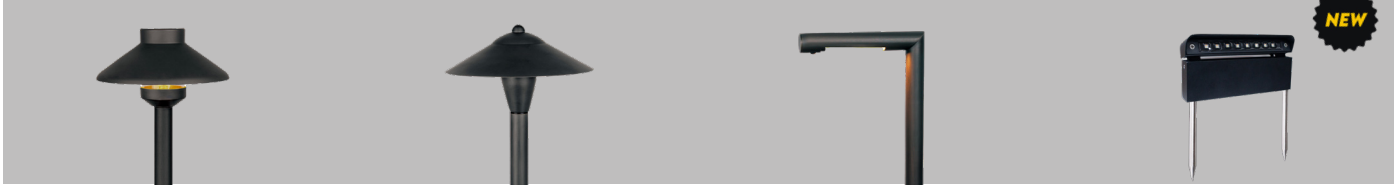
Tru-Scapes® now offers a range of fixtures that come ready with Color Control, giving you app-based Bluetooth access to RGBCW color, warm-to-cool white tuning, dimming, and zone control. Most other Tru-Scapes® fixtures can easily be upgraded with our Color Control lamps - so you can enjoy full control without replacing your existing lights.





PATH LIGHTS

For Walkways, Flower Beds, Garden Edges & Driveways



TS-B301

Traditional Path Light

Color-changing lamp upgrade available.

- Construction: solid brass
- Light Source: G4 LED lamp
- 3 watt
- 190 lumens
- 2700K warm output
- 360° beam spread
- H 24" x W 6" x D 6"
- Available in black & bronze

TS-B302

Classic Path Light

Color-changing lamp upgrade available.

- Construction: solid brass
- Light Source: G4 LED lamp
- 3 watt
- 158 lumens
- 2700K warm output
- 360° beam spread
- H 24" x W 7-7/8" x D 7-7/8"
- Available in black & bronze

TS-B306

Modern Path Light

Color-changing lamp upgrade available.

- Construction: solid brass
- Light Source: G4 LED lamp
- 3 watt
- 96 lumens
- 2700K warm output
- 360° beam spread
- H 21-3/4" x W 1" x D 6-1/2"
- Available in black & bronze

TS-A6500C

Adjustable Angle Landscape Light

Ships color-changing ready.



- Construction: powder coated aluminum
- Light source: replaceable module
- 2 watt
- 68 lumens - dimmable with app
- 2700K - 6500K RGBCW BT control
- 120° beam spread
- H 8-1/2" x W 7-1/8" x D 1-1/2"
- Available in black or bronze

ACCENT LIGHTS

For Trees, Facades, Garden Features & Architectural Highlights



TS-B102

Traditional Accent Light

Includes a ground stake. Color-changing lamp upgrade available.

- Construction: solid brass
- Light Source: MR16 LED lamp
- 4 watt
- 382 lumens
- 2700K warm output
- 40° beam spread
- H 6-5/8" x W 2-3/8" x D 2-3/8"
- Available in black & bronze

TS-B105

Wall Wash Light

Color-changing lamp upgrade available.

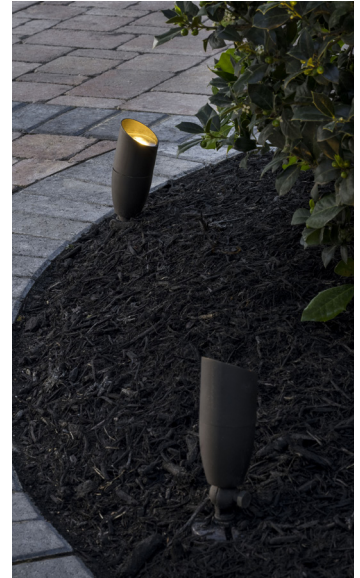
- Construction: solid brass
- Light Source: MR16 LED lamp
- 5.5 watt
- 383 lumens
- 2700K warm output
- 60° beam spread
- H 5" x W 4-3/8" x D 4-3/8"
- Available in black & bronze

TS-B106

High Power Accent Light

Color-changing lamp upgrade available.

- Construction: solid brass
- Light Source: PAR36 LED lamp
- 8 watt
- 435 lumens
- 2700K warm output
- 120° beam spread
- H 5-3/8" x W 4-5/8" x D 4-5/8"
- Available in black & bronze





WELL LIGHTS

For Uplighting Trees, Walls, Architectural Features & Landscapes



TS-B201

High Power In-Ground Well Light

Color-changing lamp upgrade available.

- Construction: PVC & solid brass
- Light source: PAR36 LED lamp
- 8 watt
- 560 lumens
- 2700K warm output
- 120° beam spread
- H 9-5/8" x W 5-1/2" x D 5-1/2"
- Available in black & bronze

TS-B203

In-Ground Well Light

Color-changing lamp upgrade available.

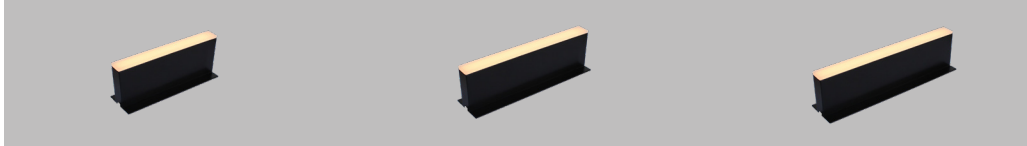
- Construction: PVC & solid brass
- Light source: MR16 LED lamp
- 4 watt
- 308 lumens
- 2700K warm output
- 60° beam spread
- H 6-7/8" x W 4" x D 4"
- Available in black & bronze





PAVER LIGHTS

For Patios, Walkways & Hardscape Edges



TS-HPL-6

Traditional 6" Paver Light

- Construction: aluminum & acrylic
- Integrated LED light source
- 1.5 watt
- 26 lumens
- 2700K warm output
- 120° beam spread
- H 2-3/8" x W 6" x D 3/4"
- Available in black

TS-HPL-8

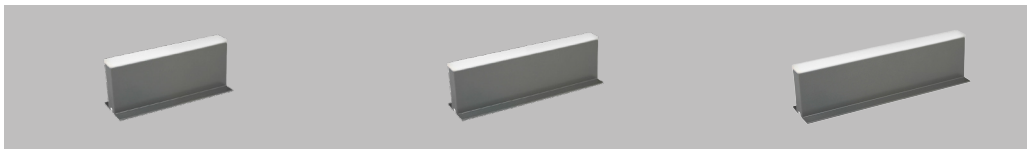
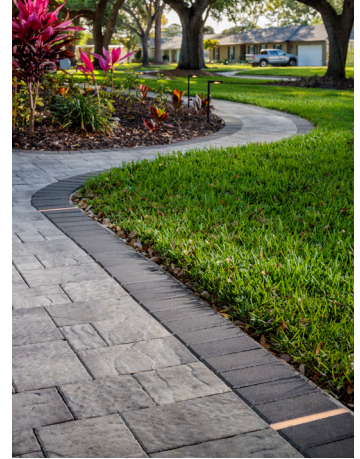
Traditional 8" Paver Light

- Construction: aluminum & acrylic
- Integrated LED light source
- 1.8 watt
- 44 lumens
- 2700K warm output
- 120° beam spread
- H 2-3/8" x W 8" x D 3/4"
- Available in black

TS-HPL-9

Traditional 9" Paver Light

- Construction: aluminum & acrylic
- Integrated LED light source
- 2.5 watt
- 52 lumens
- 2700K warm output
- 120° beam spread
- H 2-3/8" x W 9" x D 3/4"
- Available in black



TS-MHPL-6

Modern 6" Paver Light

- Construction: aluminum & acrylic
- Integrated LED light source
- 1.5 watt
- 32 lumens
- 4000K cool output
- 120° beam spread
- H 2-3/8" x W 6" x D 3/4"
- Available in grey

TS-MHPL-8

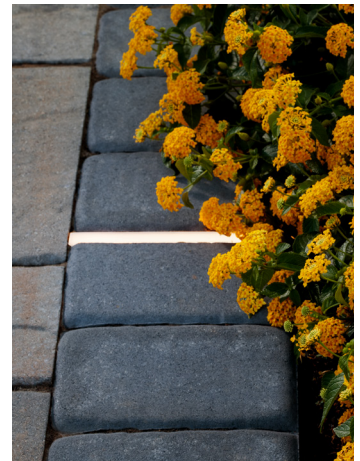
Modern 8" Paver Light

- Construction: aluminum & acrylic
- Integrated LED light source
- 1.8 watt
- 52 lumens
- 4000K cool output
- 120° beam spread
- H 2-3/8" x W 8" x D 3/4"
- Available in grey

TS-MHPL-9

Modern 9" Paver Light

- Construction: aluminum & acrylic
- Integrated LED light source
- 2.5 watt
- 62 lumens
- 4000K cool output
- 120° beam spread
- H 2-3/8" x W 9" x D 3/4"
- Available in grey



TS-HPLC-6

Color 6" Paver Light

Ships color-changing ready.

- Construction: aluminum & acrylic
- Integrated LED light source
- 1.5 watt
- 40 lumens - dimmable with app
- 2700K - 6500K RGBCW BT control
- 120° beam spread
- H 2-3/8" x W 6" x D 1"
- Available in acrylic

TS-HPLC-8

Color 8" Paver Light

Ships color-changing ready.

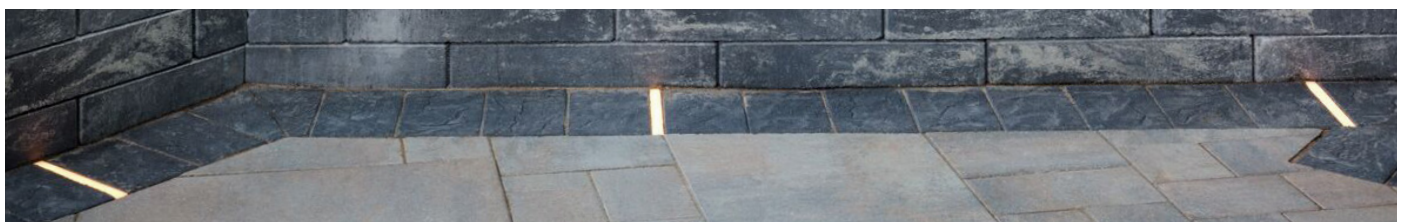
- Construction: aluminum & acrylic
- Integrated LED light source
- 2 watt
- 65 lumens - dimmable with app
- 2700K - 6500K RGBCW BT control
- 120° beam spread
- H 2-3/8" x W 8" x D 1"
- Available in acrylic

TS-HPLC-9

Color 9" Paver Light

Ships color-changing ready.

- Construction: aluminum & acrylic
- Integrated LED light source
- 2.5 watt
- 75 lumens - dimmable with app
- 2700K - 6500K RGBCW BT control
- 120° beam spread
- H 2-3/8" x W 9" x D 1"
- Available in acrylic





PILLAR LIGHTS

For Columns, Entranceways, Patios & Pillars



TS-PL100

Traditional Pillar Light

Color-changing lamp upgrade available.

- Construction: powder coated aluminum
- Light source: G4 LED lamp
- 3 watt
- 195 lumens
- 2700K warm output
- 360° beam spread
- H 20" x W 9" x D 9"
- Available in bronze

TS-PL101

Modern Pillar Light

Color-changing lamp upgrade available.

- Construction: powder coated aluminum
- Light source: G4 LED lamp
- 3 watt
- 180 lumens
- 2700K warm output
- 360° beam spread
- H 14-3/8" x W 7-1/2" x D 7-1/2"
- Available in black

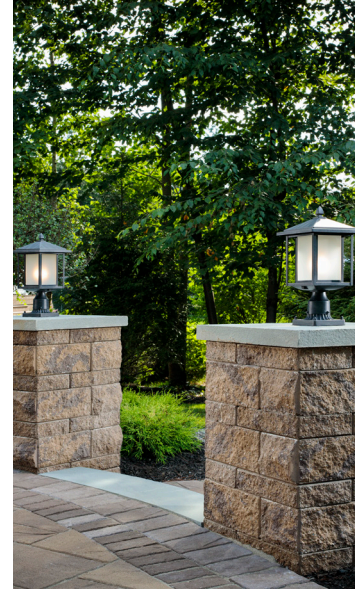
TS-PL102

Noble Pillar Light

Ships color-changing ready.



- Construction: powder coated aluminum
- Light source: TSS-AS300-LAMP
- 6 watt
- 184 lumens - dimmable with app
- 2700K - 6500K RGBCW BT control
- 360° beam spread
- H 19-7/8" x W 11" x D 11"
- Available in bronze



REPLACEABLE HARDSCAPE LIGHTS

For Retaining Walls, Step Caps, Outdoor Kitchens & Patios



TS-A3000C

Mini Color Changing Hardscape Light

Ships color-changing ready.



- Construction: powder coated aluminum
- Light source: replaceable module
- 0.8 watt
- 18 lumens - dimmable with app
- 2700K - 6500K RGBCW BT control
- 120° beam spread
- H 7/8" x W 3-1/2" x D 3"
- Requires 1/2" tread overhang*
- Available in black or bronze

TS-A6000

Traditional Hardscape Light

Color-changing lamp upgrade available.

- Construction: powder coated aluminum
- Light source: replaceable module
- 1 watt
- 85 lumens
- 2700K warm output
- 120° beam spread
- H 7/8" x W 7-1/8" x D 3"
- Requires 1/2" tread overhang*
- Available in black or bronze

TS-A6000C

Color Changing Hardscape Light

Ships color-changing ready.



- Construction: powder coated aluminum
- Light source: replaceable module
- 2 watt
- 68 lumens - dimmable with app
- 2700K - 6500K RGBCW BT control
- 120° beam spread
- H 7/8" x W 7-1/8" x D 3"
- Requires 1/2" tread overhang*
- Available in black or bronze

TS-MA6000

Modern Hardscape Light

Color-changing lamp upgrade available.

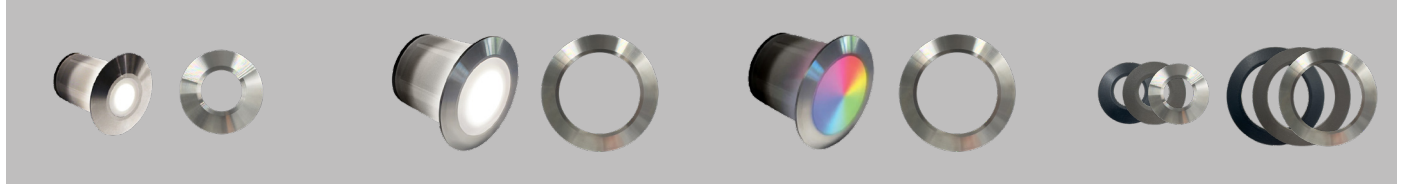
- Construction: powder coated aluminum
- Light source: replaceable module
- 1 watt
- 92 lumens
- 4000K cool output
- 120° beam spread
- H 7/8" x W 7-1/8" x D 3"
- Requires 1/2" tread overhang*
- Available in grey





DOT LIGHTS

For Pavers, Stone, Wood & Decking



TS-M15DOT-SS

Modern 1.5" Dot Light

Ships with 1.5" stainless steel flat ring. Dot rings are replaceable; integrated light source is not.

- Construction: PVC & stainless steel ring
- Integrated LED light source
- .25 watt
- 12 lumens
- 4000K cool output
- 60° beam spread
- H 1-5/8" x W 1-1/2" x D 1-1/2"

TS-M25DOT-SS

Modern 2.5" Dot Light

Ships with 2.5" stainless steel flat ring. Dot rings are replaceable; integrated light source is not.

- Construction: PVC & stainless steel ring
- Integrated LED light source
- 1.2 watt
- 105 lumens
- 4000K cool output
- 60° beam spread
- H 1-5/8" x W 2-1/2" x D 2-1/2"

TS-M25DOTC-SS

Modern Color Changing 2.5" Dot Light

Ships with 2.5" stainless steel flat ring. Ships color-changing ready.



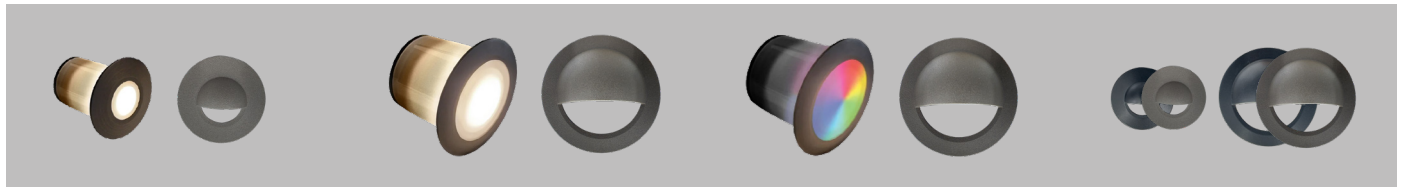
- Construction: PVC & stainless steel ring
- Integrated LED light source
- 1.5 watt
- 60 lumens - dimmable with app
- 2700K - 6500K RGBCW BT control
- 60° beam spread
- H 1-5/8" x W 2-1/2" x D 2-1/2"

TS-D150/250-FLT

1.5" & 2.5" Flat Replacement Rings

Flat rings available in black, bronze, or stainless steel.

- Powder-coated aluminum (black & bronze options)
- Stainless steel option available only in flat rings
- Dimensions:
 - 150 Flat: H 1-1/2" x W 1-1/2" x D 1/3"
 - 250 Flat: H 2-1/2" x W 2-1/2" x D 1/3"
- Sold in packs of 10



TS-15DOT-BRZ

Traditional 1.5" Dot Light

Ships with 1.5" bronze flat ring and 1.5" bronze eyebrow ring. Dot rings are replaceable; integrated light source is not.

- Construction: PVC & bronze powder coated aluminum ring
- Integrated LED light source
- .25 watt
- 10 lumens
- 2700K warm output
- 60° beam spread
- H 1-5/8" x W 1-1/2" x D 1-1/2"

TS-25DOT-BRZ

Traditional 2.5" Dot Light

Ships with 2.5" bronze flat ring and 2.5" bronze eyebrow ring. Dot rings are replaceable; integrated light source is not.

- Construction: PVC & bronze powder coated aluminum ring
- Integrated LED light source
- 1.2 watt
- 90 lumens
- 2700K warm output
- 60° beam spread
- H 1-5/8" x W 1-1/2" x D 1-1/2"

TS-25DOTC-BRZ

Traditional Color Changing 2.5" Dot Light

Ships with 2.5" bronze flat ring and 2.5" bronze eyebrow ring. Ships color-changing ready.



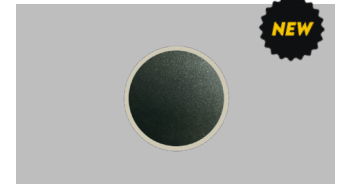
- Construction: PVC & bronze powder coated aluminum ring
- Integrated LED light source
- 1.5 watt
- 60 lumens - dimmable with app
- 2700K - 6500K RGBCW BT control
- 60° beam spread
- H 1-5/8" x W 2-1/2" x D 2-1/2"

TS-D150/250-EYE

1.5" & 2.5" Eyebrow Replacement Rings

Eyebrow rings available in black & bronze.

- Powder-coated aluminum (black & bronze options)
- Stainless steel option available only in flat rings
- Dimensions:
 - 150 Eye: H 1-1/2" x W 1-1/2" x D 3/4"
 - 250 Eye: H 2-1/2" x W 2-1/2" x D 3/4"
- Sold in packs of 10



TS-D25-CVR-BLK

2.5" Black Top Halo Replacement Rings

- Replacement ring for 2.5" Dot Light
- H 2-1/2" x W 2-1/2" x D 3/4"
- Sold in packs of 10



POST CAP LIGHTS For Deck & Fence Post Caps



TS-C120C 2" LED Post Cap Light

Fits standard 2" aluminum posts.
Ships color-changing ready.

- Construction: powder coated aluminum
- Integrated LED light source
- 16 watt
- 10 lumens - dimmable with app
- 2700K - 6500K RGBCW BT control
- 360° beam spread
- H 1-3/4" x W 2-1/4" x D 2-1/4"
- Available in black

TS-C125 2.5" LED Post Cap Light

Fits standard 2.5" aluminum posts.

- Construction: powder coated aluminum
- Integrated LED light source
- 2 watt
- 18 lumens
- 2700K warm output
- 360° beam spread
- H 1-7/8" x W 2-3/4" x D 2-3/4"
- Available in black

TS-C125C 2.5" Color Changing LED Post Cap Light

Fits standard 2.5" aluminum posts.
Ships color-changing ready.

- Construction: powder coated aluminum
- Integrated LED light source
- 3 watt
- 22 lumens - dimmable with app
- 2700K - 6500K RGBCW BT control
- 360° beam spread
- H 1-7/8" x W 2-3/4" x D 2-3/4"
- Available in black

TS-C130 3" LED Post Cap Light

Fits standard 3" aluminum posts.

- Construction: powder coated aluminum
- Integrated LED light source
- 2 watt
- 30 lumens
- 2700K warm output
- 360° beam spread
- H 2-5/8" x W 3-3/8" x D 3-3/8"
- Available in black



TS-C140 4" LED Post Cap Light

Fits standard 4" vinyl (PVC) posts.

- Construction: PVC plastic
- Integrated LED light source
- 3 watt
- 32 lumens
- 2700K warm output
- 360° beam spread
- H 2-3/8" x W 6" x D 6"
- Available in white

TS-C140C 4" Color Changing LED Post Cap Light

Fits standard 4" vinyl (PVC) posts.
Ships color-changing ready.

- Construction: PVC plastic
- Integrated LED light source
- 4 watt
- 32 lumens - dimmable with app
- 2700K - 6500K RGBCW BT control
- 360° beam spread
- H 2-3/8" x W 6" x D 6"
- Available in white

TS-C145 4.5" LED Post Cap Light

Fits a TREX® Transcend deck post.

- Construction: AES UV rated plastic
- Integrated LED light source
- 3 watt
- 27 lumens
- 2700K warm output
- 360° beam spread
- H 2-5/8" x W 6" x D 6"
- Available in black, brown, & white

TS-C145C 4.5" Color Changing LED Post Cap Light

Fits a TREX® Transcend deck post.
Ships color-changing ready.

- Construction: AES UV rated plastic
- Integrated LED light source
- 4 watt
- 30 lumens - dimmable with app
- 2700K - 6500K RGBCW BT control
- 360° beam spread
- H 2-5/8" x W 6" x D 6"
- Available in black, brown, & white



TS-C150 5" LED Post Cap Light

Fits TimberTech® Radiance deck posts.

- Construction: AES UV rated plastic
- Integrated LED light source
- 3 watt
- 40 lumens
- 2700K warm output
- 360° beam spread
- H 2-7/8" x W 7-1/8" x D 7-1/8"
- Available in black, brown, white

TS-C150V 5" LED Post Cap Light

Fits standard 5" vinyl (PVC) posts.

- Construction: PVC plastic
- Integrated LED light source
- 3 watt
- 31 lumens
- 2700K warm output
- 360° beam spread
- H 2" x W 6-3/4" x D 6-3/4"
- Available in white





STEP RISER LIGHTS

For Steps & Decks



TS-A501 3" LED Step Riser Light

Available in black, brown, & white finish.

- Construction: powder coated aluminum
- Integrated LED light source
- 0.5 watt
- 18 lumens
- 2700K warm output
- 180° beam spread
- H 5/8" x W 3" x D 1/2"
- Requires 1/2" tread overhang*

TS-A501C 3" Color Changing LED Step Riser Light

Available in black, brown, & white finish. Ships color-changing ready.

- Construction: powder coated aluminum
- Integrated LED light source
- 1 watt
- 16 lumens - dimmable with app
- 2700K - 6500K RGBCW BT control
- 180° beam spread
- H 5/8" x W 3" x D 1/2"
- Requires 1/2" tread overhang*

TS-A1001 6" LED Step Riser Light

Available in black, brown, & white finish.

- Construction: powder coated aluminum
- Integrated LED light source
- 1.5 watt
- 123 lumens
- 2700K warm output
- 180° beam spread
- H 5/8" x W 6" x D 1/2"
- Requires 1/2" tread overhang*

TS-A1001C 6" Color Changing LED Step Riser Light

Available in black, brown, & white finish. Ships color-changing ready.

- Construction: powder coated aluminum
- Integrated LED light source
- 2 watt
- 65 lumens - dimmable with app
- 2700K - 6500K RGBCW BT control
- 180° beam spread
- H 5/8" x W 6" x D 1/2"
- Requires 1/2" tread overhang*





SURFACE MOUNTED LIGHTS


For Steps & Deck Posts



TS-25WMA Puck Light

- Construction: powder coated aluminum
- Integrated LED light source
- 2 watt
- 44 lumens
- 2700K warm output
- 180° beam spread
- H 2-1/2" x W 2-1/2" x D 3/4"
- Available in black, brown, & white

TS-40WMA Wedge Light

- Ships color-changing ready.
- 
- Construction: powder coated aluminum
 - Integrated LED light source
 - 15 watt
 - 16 lumens - dimmable with app
 - 2700K - 6500K RGBCW BT control
 - 180° beam spread
 - H 4" x W 2" x D 1"
 - Available in black & white



TRU-POST® LIGHTS & ACCESSORIES

For Deck & Fence Post Caps



TP-WL101A Tru-Post® Classic Light

- Color-changing lamp upgrade available.
- Construction: powder coated aluminum
 - Included G4 LED lamp
 - 3 watt
 - 126 lumens
 - 2700K warm output
 - 360° beam spread
 - H 5-1/4" x W 7-7/8" x D 7-7/8"
 - Available in black

TP-WL103A Tru-Post® Traditional Light

- Color-changing lamp upgrade available.
- Construction: powder coated aluminum
 - Included G4 LED lamp
 - 3 watt
 - 184 lumens
 - 2700K warm output
 - 360° beam spread
 - H 8" x W 6" x D 6"
 - Available in black

TP-OL12SS Tru-Post® Stainless Steel Torch

- Construction: powder coated aluminum & weather-resistant stainless steel
- H 18" x W 4-1/2" x D 4-1/2"
- Replacement wicks available for purchase

TP-ST100 Tru-Post® Solar Torch

- Construction: powder coated aluminum
- Power source: solar-powered battery
- 37 lumens
- 1800K warm output
- 360° beam spread
- H 25" x W 5" x D 5"
- Available in black



TP-PB142 Tru-Post® Planter Basket

- Construction: powder coated aluminum
- Basket material: 14" coco liner
- Stem size: 2"
- H 8" x W 14" x D 14"
- Available in black

TP-C20/25/4 Tru-Post® Post Caps

- From left to right
- TP-C20-BLK: 2" x 2" black aluminum cap
- TP-C25-BLK: 2.5" x 2.5" black aluminum cap
- TP-C4-WHT: 4" x 4" white vinyl cap

TP-C45-XXX Tru-Post® Post Caps Continued

- From left to right
- 4.5" x 4.5" black Vinyl Cap
- 4.5" x 4.5" white Vinyl Cap
- 4.5" x 4.5" brown Vinyl Cap
- All 4.5" vinyl caps are designed to fit Trex Transcend railing post

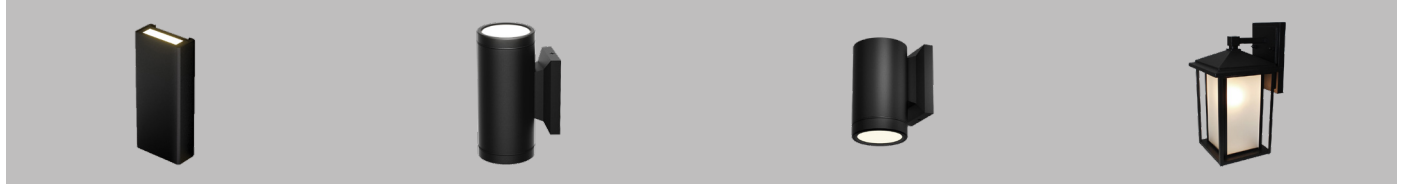
TP-UMA-BLK Tru-Post® Universal Mount

- Construction: black powder coated aluminum
- Threaded for Tru-Post® accessories
- Compatible only with planter baskets and torches



WALL & POST SCONCE LIGHTS

For Exterior Walls, Deck Posts & Outdoor Structures



TSS-AS200

Low Profile Post / Wall Sconce

Ships color-changing ready.



- Construction: powder coated aluminum
- Integrated LED light source
- 3 watt
- 50 lumens - dimmable with app
- 2700K - 6500K RGBCW BT control
- 60° beam spread
- H 4" x W 2" x D 7/8"
- Available in black, bronze, & white

TSS-AS201

Dual Lamp Sconce

Ships color-changing ready.



- Construction: powder coated aluminum
- Integrated LED light source
- 10 watt
- 802 lumens - dimmable with app
- 2700K - 6500K RGBCW BT control
- 60° beam spread
- H 5-3/8" x W 2" x D 3-1/4"
- Available in black & bronze

TSS-AS202

Single Lamp Sconce

Ships color-changing ready.



- Construction: powder coated aluminum
- Integrated LED light source
- 6 watt
- 456 lumens - dimmable with app
- 2700K - 6500K RGBCW BT control
- 60° beam spread
- H 3-1/4" x W 2" x D 3-1/4"
- Available in black & bronze

TSS-AS300

Modern Sconce

Ships color-changing ready.



- Construction: powder coated aluminum
- Integrated LED light source
- 6 watt
- 300 lumens - dimmable with app
- 2700K - 6500K RGBCW BT control
- 360° beam spread
- H 12" x W 6-3/8" x D 7-5/8"
- Available in black & bronze

CEILING, PENDANT & BISTRO LIGHTS

For Pergolas, Patios & Outdoor Entertaining Spaces



TSS-AC100

Recessed Ceiling & Soffit Light

Ships color-changing ready.



- Construction: powder coated aluminum
- Integrated LED light source
- 8 watt
- 350 lumens - dimmable with app
- 2700K - 6500K RGBCW BT control
- 120° beam spread
- 4" diameter x 1-3/8" height
- Available in black & white

TSS-AP100

Ceiling & Soffit Light

Ships color-changing ready.



- Construction: powder coated aluminum
- Integrated LED light source
- 8 watt
- 392 lumens - dimmable with app
- 2700K - 6500K RGBCW BT control
- 120° beam spread
- 4" diameter x 1-3/8" height
- Available in black, bronze, & white

TSS-AP400

Traditional Pendant Light

Ships color-changing ready.



- Construction: powder coated aluminum
- Integrated LED light source
- 2.5 watt
- 68 lumens - dimmable with app
- 2700K - 6500K RGBCW BT control
- 120° beam spread
- H 5-3/4" x W 2-3/8" x D 2-3/8"
- Available in black & bronze

TSS-SL100

Hanging Bistro Lights

Connect 12' lengths together
Comes with 6 lamps per line

- Edison Style LED lamps
- Low voltage light source
- 1 watt per lamp, 2700k
- 12' strip lights w/ 6pcs, 6 watt
- 90 lumens per lamp
- 10-15v AC/DC
- H 6" x W 12"
- TSS-GC1—adapter included

LOW VOLTAGE Outdoor Ceiling Fan

TSS-CF100

WATERPROOF • SMART TECHNOLOGY



- Fan Size: 52 inch
- Voltage: 12V AC (Low Voltage)
- Light Power: 24 Watt Max
- Kelvin: 3CCT Dimmable LED
- Motor Power: 35 Watt Max
- Speed: 6 speed with reverse direction option
- Main Housing Color: Matte Black
- Down Rod: 6 inch, 12 inch, or 24 inch options incl.
- Blades: 3 Black ABS Blades incl.
- *Wood Grain (Sold Separately)
- Controller: Remote or Bluetooth / WiFi APP Control





CONCRETE LIGHTS

For Concrete Driveways, Patios, Walls & Steps (*Patent Pending*)



TSC-150

Concrete 1.5" Dot Light

Ships with 1.5" black flat ring and 1.5" black eyebrow ring. Dot rings are replaceable; integrated light source is not.

- Construction: PVC & black powder coated aluminum ring
- Integrated LED light source
- 0.25 watt
- 10 lumens
- 2700K warm output
- 60° beam spread
- Black eyebrow and flat caps

TSC-250C

Concrete 2.5" Dot Light

Ships with 2.5" black flat ring and 2.5" black eyebrow ring. Ships color-changing ready.

- Construction: PVC & black powder coated aluminum ring
- Integrated LED light source
- 1.5 watt
- 60 lumens - dimmable with app
- 2700K - 6500K RGBCW BT control
- 60° beam spread
- Black eyebrow and flat caps

TSC-600C

Concrete 6" Step Light

Ships color-changing ready.

- Construction: Powder-coated aluminum
- Integrated LED light source
- 1.5 watt
- 8 lumens - dimmable with app
- 2700K - 6500K RGBCW BT control
- 120° beam spread
- Available in black

INSTALLATION SERIES

Step-by-Step Setup for All Concrete Lights

Scan the QR code above to watch the full animated installation guide for Tru-Scapes® concrete lights, featuring the TSC-150, TSC-250C, and TSC-600C.

- This three-part video series provides clear instructions on:
- Mount flange installation
 - Wiring and final assembly
 - Best practices for a clean, professional finish





TRANSFORMERS

For Reliable, Low-Voltage Power Distribution In Outdoor Lighting Systems



TS-TBPT-100
100W Transformer

Single-zone 100W transformer with built-in timer

- Construction: black UV rated plastic
- Input voltage: 120V AC
- Output voltage: 12V/15V AC
- Timer/photocell compatibility
- Cord length: 6 ft
- H 6-1/2" x W 4-1/2" x D 3-1/2"
- Wall-mountable

TS-TSSA-200
200W Transformer

Single-zone 200W astronomical transformer with built-in timer

- Construction: stainless steel
- Input voltage: 120V AC
- Output voltage: 12V/15V AC
- Astronomical timer (single zone)
- Timer/photocell compatibility
- Cord length: 6 ft
- H 8" x W 5-1/2" x D 4-1/2"
- Wall-mountable

TS-TSSW-400
400W Wifi Transformer

Dual-zone 400W WiFi transformer with app control

- Construction: stainless steel
- Input voltage: 120V AC
- Output voltage: 12V/15V AC
- Dual independent zones
- WiFi timer compatibility
- Cord length: 6 ft
- H 11-1/2" x W 7" x D 6"
- Wall-mountable



REP KITS

For Landscape, Deck, & Structure — *Sell like a TRU pro*



TS-REP-LAND
Landscape /
Hardscape Rep Kit

- TS-A6000-BLK
- TS-B102-BRZ
- TS-B306-BRZ
- TS-360G4-C
- TS-HPLC-8
- TS-25DOTC-SS
- TS-40MR16C
- TS-15DOT-BRZ
- 2pcs Splitter + 1pc wire + 1pc power pack

TS-REP-DECK
Deck Rep Kit

- TS-C145-BLK
- TS-C140-WHT
- TS-A501-BRN
- TS-25WMA-WHT
- TS-40WMA-BLK
- TSS-AS200-BRZ
- TS-1001C-WHT
- TS-C130-BLK
- TS-C125C-BLK
- TS-15DOT-BRZ
- TS-M25DOTC-SS
- 2pcs Splitter + 1pc wire + 1pc power pack

TS-REP-STRUC
Structure Rep Kit

- TSS-AC100-WHT
- TSS-API00-WHT
- TSS-AS200-BLK
- TSS-AS202-BRZ
- TSS-AS201-BLK
- TSS-AP400-BRZ
- 2pcs Splitter + 1pc wire + 1pc power pack

REP KIT INFO ONLINE
Unlock the TRU potential
for more sales!

Scan the QR code above to see more information for Tru-Scapes® Rep Kits that feature Landscape / Hardscape Lights, Deck Lights, & Structure Lights.

- This three series sales tool provides clear instructions on:
- Leveraging sales in your favor
 - Providing a value and ROI
 - Extending time outdoors and adding safety to a property



REPLACEMENT LAMPS

For Swapping Out Light Sources In Compatible Fixtures



TS-360G4-1

G4 LED Lamp

- Installation: drop-in replacement
- Compatibility: G4 bi-pin fixtures
- 3 watt
- 380 lumens
- 2700K warm output
- 360° beam spread
- H 1-3/8" x W 5/8" x D 5/8"

TS-360G4-C

G4 LED Color Changing Lamp

- Installation: drop-in replacement
- Compatibility: G4 bi-pin fixtures
- 2 watt
- 110 lumens - dimmable with app
- 2700K - 6500K RGBCW BT control
- 360° beam spread
- H 1-3/8" x W 5/8" x D 5/8"

TS-120PAR36

PAR36 LED Lamp

- Installation: drop-in replacement
- Compatibility: slip-on spade connectors
- 8 watt
- 850 lumens
- 2700K warm output
- 120° beam spread
- H 2-3/8" x W 4-3/8" x D 4-3/8"

TS-120PAR36-C

PAR36 LED Color Changing Lamp

- Installation: drop-in replacement
- Compatibility: slip-on spade connectors
- 8 watt
- 640 lumens - dimmable with app
- 2700K - 6500K RGBCW BT control
- 120° beam spread
- H 2-3/8" x W 4-3/8" x D 4-3/8"



TS-40MR16-4W

MR16 4W Lamp

- Installation: drop-in replacement
- Compatibility: GU5.3 bi-pin fixtures
- 4 watt
- 400 lumens
- 2700K warm output
- 40° beam spread
- H 1-3/4" x W 2" x D 2"

TS-60MR16-5.5W

MR16 5.5W Lamp

- Installation: drop-in replacement
- Compatibility: GU5.3 bi-pin fixtures
- 5.5 watt
- 480 lumens
- 2700K warm output
- 60° beam spread
- H 1-3/4" x W 2" x D 2"

TS-40MR16-C

MR16 Color Changing Lamp

- Installation: drop-in replacement
- Compatibility: GU5.3 bi-pin fixtures
- 8 watt
- 420 lumens - dimmable with app
- 2700K - 6500K RGBCW BT control
- 40° beam spread
- H 1-7/8" x W 2" x D 2"



REPLACEMENT LIGHT MODULES

For Restoring Or Upgrading Internal Fixture Components



TS-A3000C -RLAMP

A3000C Replacement Color Changing Module

- Installation: screw-in module
- Compatibility: A3000 Series
- .8 watt
- 18 lumens - dimmable with app
- 2700K - 6500K RGBCW BT control
- 120° beam spread
- H 3/4" x W 3-3/8" x D 3/4"

TS-A6000 -RLAMP

A6000 Replacement Module

- Installation: screw-in module
- Compatibility: A6000 Series
- 1 watt
- 85 lumens
- 2700K warm output
- 120° beam spread
- H 5/8" x W 6-7/8" x D 3/4"
- A6000 lamps compatible with all A6000/6500 fixtures - mix & match

TS-A6000C-RLAMP

A6000C & A6500C Replacement Color Changing Module

- Installation: screw-in module
- Compatibility: A6000 Series
- 2 watt
- 68 lumens - dimmable with app
- 2700K - 6500K RGBCW BT control
- 120° beam spread
- H 5/8" x W 6-7/8" x D 3/4"
- A6000 lamps compatible with all A6000/6500 fixtures - mix & match

TS-MA6000 -RLAMP

MA6000 Replacement Module

- Installation: screw-in module
- Compatibility: A6000 Series
- 1 watt
- 92 lumens
- 4000K cold output
- 120° beam spread
- H 5/8" x W 6-7/8" x D 3/4"
- A6000 lamps compatible with all A6000/6500 fixtures - mix & match



ACCESSORIES & REPLACEMENTS



SMART CONTROL

For Extended Bluetooth Connectivity & Seamless Lighting Control



TS-EXT-001-BLK

Bluetooth Range Extender

- Construction: UV Rated Plastic
- RGBCW Bluetooth Control Extender
- Lead Wire: 36" connectors
- Includes a ground stake
- H 23" x W 1-1/2" x 1-1/2"



MOUNTING & EXTENSION HARDWARE

For Flexible Fixture Positioning & Secure Installs



TS-UM12B

Base Mount

- Construction: solid brass
- Mounts to: Walls, trees, or other flat surfaces
- H 1-1/2" x W 3" x D 3"
- Available in black & bronze

TS-STEM16

Extension / Replacement Stem

- Construction: solid brass
- Raises path/accent lights for flexible installs
- H 16" x W 1" x D 1"
- Available in black & bronze



WIRING & CONNECTION TOOLS

For Clean, Professional Installation



TS-122G250-EZ

250' 12/2 EZ Pull Wire

- 12/2 low voltage landscape lighting wire
- Copper-coated aluminum construction
- EZ Pull carton for easy dispensing
- Rated for direct burial installations

TS-WNUT50

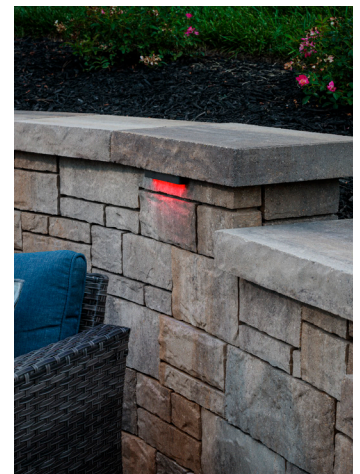
Gel-Filled Wire Nuts (50 pcs.)

- Keeps connections & daisy-chain runs secure and moisture-free
- Pre-filled with silicone gel for waterproof protection
- Includes 50 wire nuts per pack
- Ideal for low-voltage outdoor lighting connections

TS-WCRMP20

Tin-Plated Copper Heat Shrink Wire Connectors

- For precision and longevity with 12/2 wire connections
- Come in a package of 20
- H 1-5/8" x W 1/4"
- Heat shrink tubing not pictured
- Ideal for low-voltage outdoor lighting connections



SCAN FOR HELP, SETUP & SUPPORT



YOUR COMPLETE OUTDOOR LIGHTING SOLUTION

www.Tru-Scapes.com | @TruScapes | support@tru-scapes.com



Tru-Scapes® Website

Visit Our Official Website

- Explore all of our products
- Find local dealers and installers
- Learn more about Tru-Scapes® solutions



Resources & Guides

Browse Videos, Catalogs, & More

- Access step-by-step instructional guides
- Download installation instructions
- Watch how-to and install videos



Warranty Info

Review Our 5-Year Warranty Details

- Coverage on fixtures, bulbs, & transformers
- Terms for construction & finishes
- What's included & what's not



Color Control Help

Step-by-Step App Setup & Control Guide

- Download the Tru-Scapes® Control App
- Pairing & light control
- Troubleshooting issues

