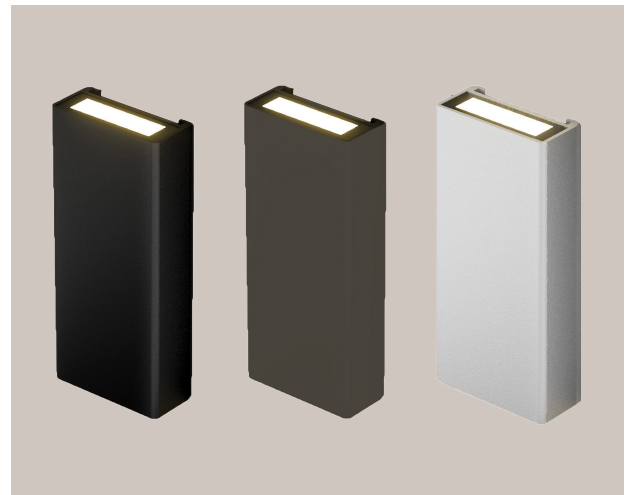
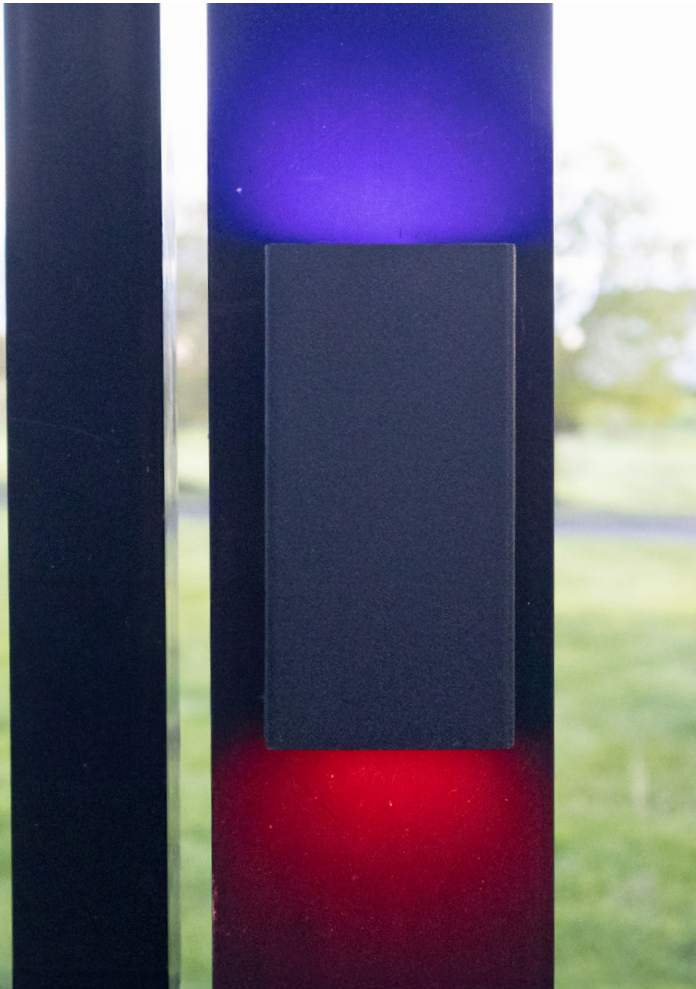


# TSS-AS200 SERIES

## DATA SPECIFICATION SHEET



CATEGORY: STRUCTURE

COLORS: ● ● ○

## PRODUCT OVERVIEW

### Low Profile Post / Wall Sconce— TSS-AS200 Series

The Tru-Scapes Low Profile Post/Wall Sconce TSS-AS200 is a sleek, versatile lighting fixture that adds modern, subtle illumination to outdoor spaces. Available in White, Black, and Bronze finishes, its minimalist design blends seamlessly into decks, posts, walls, and various architectural styles. Durable and energy-efficient with LED technology, the TSS-AS200 is perfect for enhancing both the functionality and aesthetics of your outdoor lighting setup.



Check Out Our Wall Sconces!  
Scan to Visit Our Website!

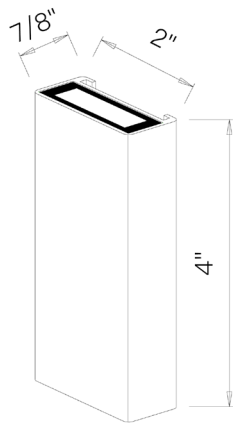
## SPECIFICATIONS

- Construction: Powder Coated Aluminum
- Finish: Black, Bronze or White
- Light Source: Integrated LEDs
- Watts: 3W
- Beam Angle: 60
- Power Factor: 0.713
- Lumens: 50LM
- Color Temp (CCT):
  - RGBCW (2700K – 6500K)
- Voltage Range: 9v – 15v AC/DC
- Powered By: 12V Low Voltage Transformer (Sold Separately)
- Dimensions: H 3-5/8" x W 2" x D 7/8"
- IP65 Rated

## FEATURES & BENEFITS

- The TSS-AS200 boasts a slim profile, making it perfect for installations where a subtle and modern look is desired.
- Available in three finishes, this sconce complements a wide range of outdoor décor and architectural styles.
- Crafted from high-quality aluminum, this sconce is built to withstand outdoor conditions.
- Remote-Control Operation: Easily change colors, brightness, and lighting effects with our remote control app.
- Low energy consumption - Low Voltage LED Design.
- This sconce is suitable for mounting on both posts and walls, allowing you to customize your outdoor lighting.

## PRODUCT DIMENSIONS



## WARRANTY

- Tru-Scapes Lighting Sockets have a Lifetime Warranty.
- Light fixtures of brass, copper or stainless steel, aluminum, including finishes are warranted for five (5) years.
- LED Bulbs are warranted for five (5) years or 30,000 hours, whichever comes first.
- Stainless Steel, Painted and Weatherproof (plastic housing) transformers, excluding timers and photo cells, are warranted for five (5) years for the original purchaser.
- Tru-Scapes warranties do not cover plants that die or burn because of continuous light shined on them. This is not a defect, but the inherent nature of such plants. Certain acid loving plants such as arborvitae, pine trees, and others must not be exposed to light of any kind for more than 18 hours a day as these plants need time to sleep and allow photosynthesis to naturally occur.
- Low voltage landscape lighting fixture housings made of brass do naturally patina in color which is not a defect. (Please see [www.Tru-Scapes.com](http://www.Tru-Scapes.com) for cleaning instructions.)
- See our full Warranty details at [www.Tru-Scapes.com/faq](http://www.Tru-Scapes.com/faq).

## CERTIFICATIONS



Indicates the product meets safety standards tested by Intertek.



Ensures the product is dust-tight and highly water-resistant.

## CONTACT US

© Copyright 2024,  
Tru-Scapes® Registered Trademark•  
Bucks County, PA • All Rights Reserved•  
[contacts@tru-scapes.com](mailto:contacts@tru-scapes.com)  
1-800-878-1240

[WWW.TRU-SCAPES.COM](http://WWW.TRU-SCAPES.COM)